

SPARE PARTS SECTION

CENTRE LATHE

Models

CL-510 x 1000, **CL-510** x 1500

Order Code L608D,

Order Code L609D

Edition No : CL-510-1

Date of Issue : 09/2022

The following section covers the spare parts diagrams and lists that were current at the time this manual was originally printed. Due to continuous improvements of the machine, changes may be made at any time without notification.

HOW TO ORDER SPARE PARTS

1. Have your machines model number, serial number & date of manufacture on hand, these can be found on the specification plate mounted on the machine
2. A scanned copy of your parts list/diagram with required spare part/s identified.

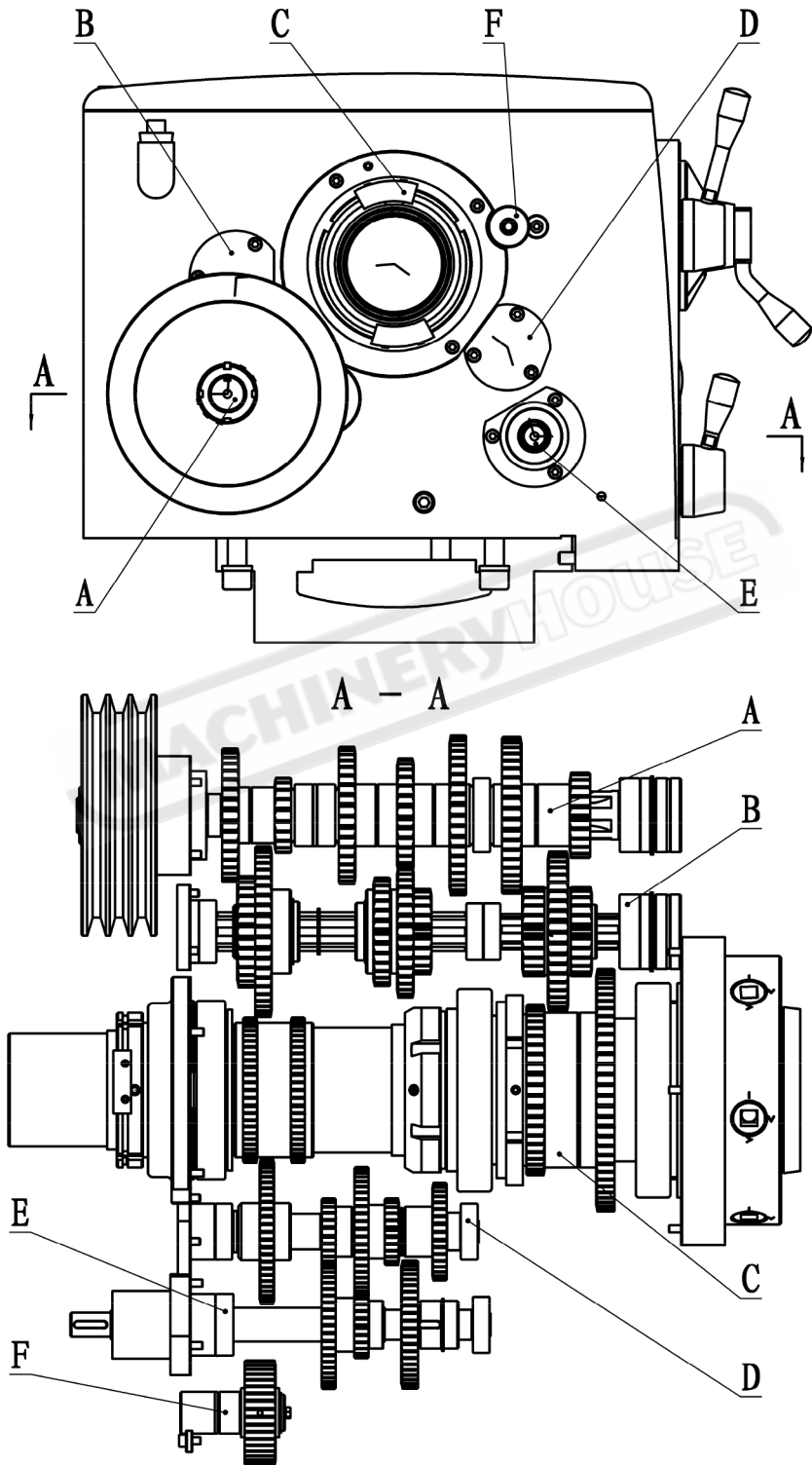
NOTE: SOME PARTS MAY ONLY BE AVAILABLE AS AN ASSEMBLY

3. Go to www.machineryhouse.com.au/contactus and fill out the inquiry form attaching a copy of scanned parts list.

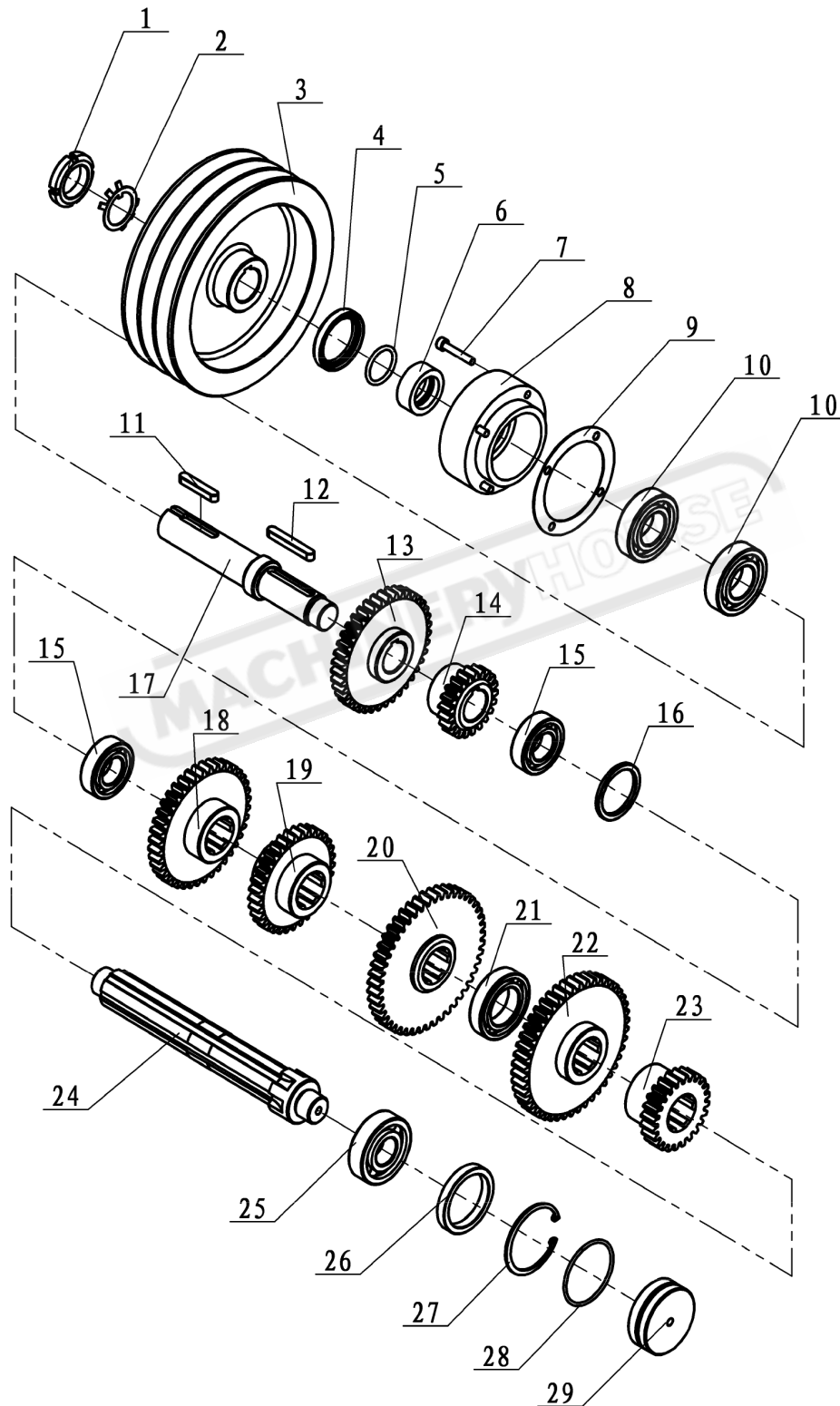
CONTENTS

Headstock Spare Parts Diagram and List.....	42
Gearbox Spare Parts Diagram and List.....	57
Apron Spare Parts Diagram and List.....	70
Tailstock Spare Parts Diagram and List.....	76
Bed Assembly Spare Parts Diagram and List.....	79
Fixed Steady Spare Parts Diagram and List.....	87
Traveling Steady Spare Parts Diagram and List.....	88
Taper Turning Attachment.....	89
Chuck Guard Spare Parts Diagram and List.....	91
Leadscrew Guard Spare Parts Diagram and List....	92
Wiring Spare Parts Diagram and List.....	93

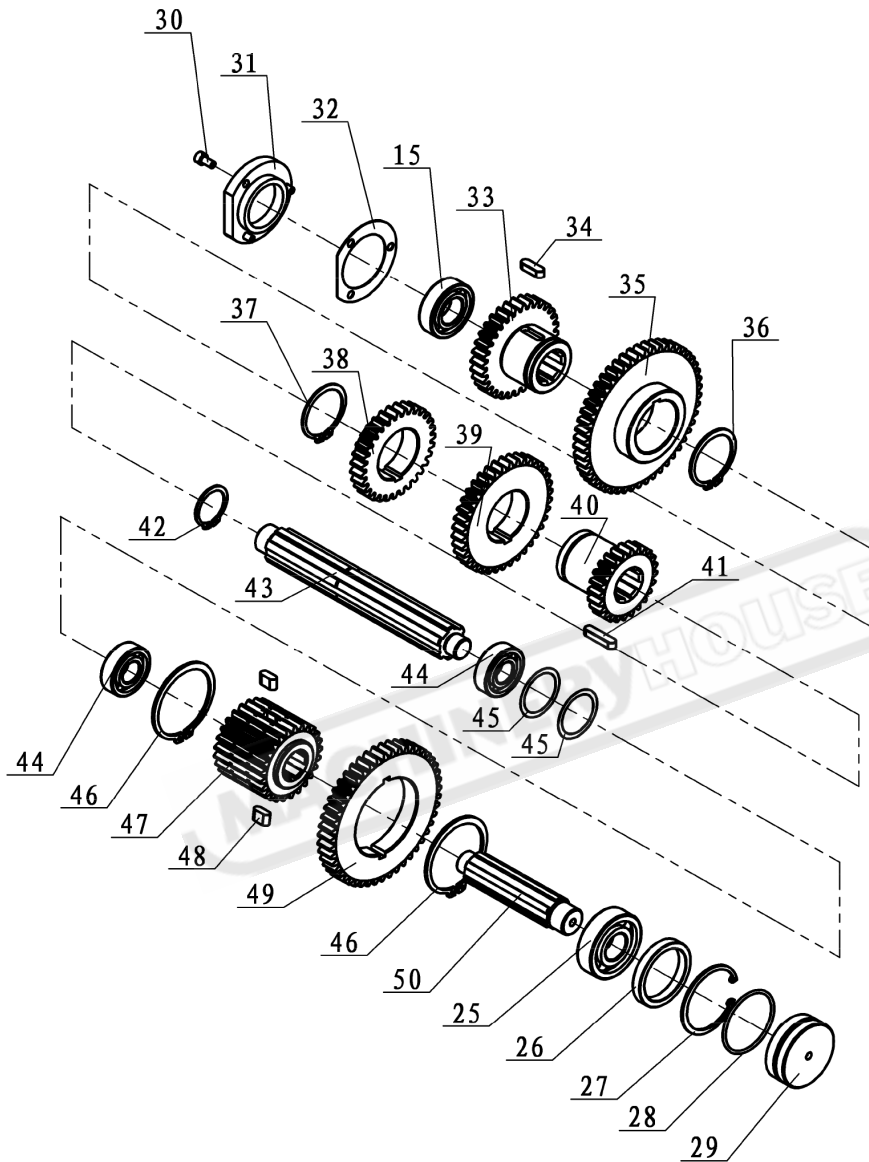
HEADSTOCK SPARE PARTS DIAGRAM



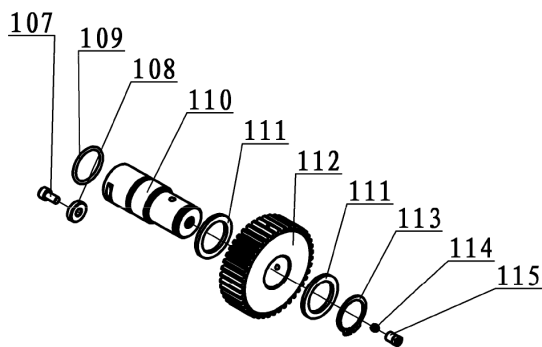
A - SHAFT DIAGRAM



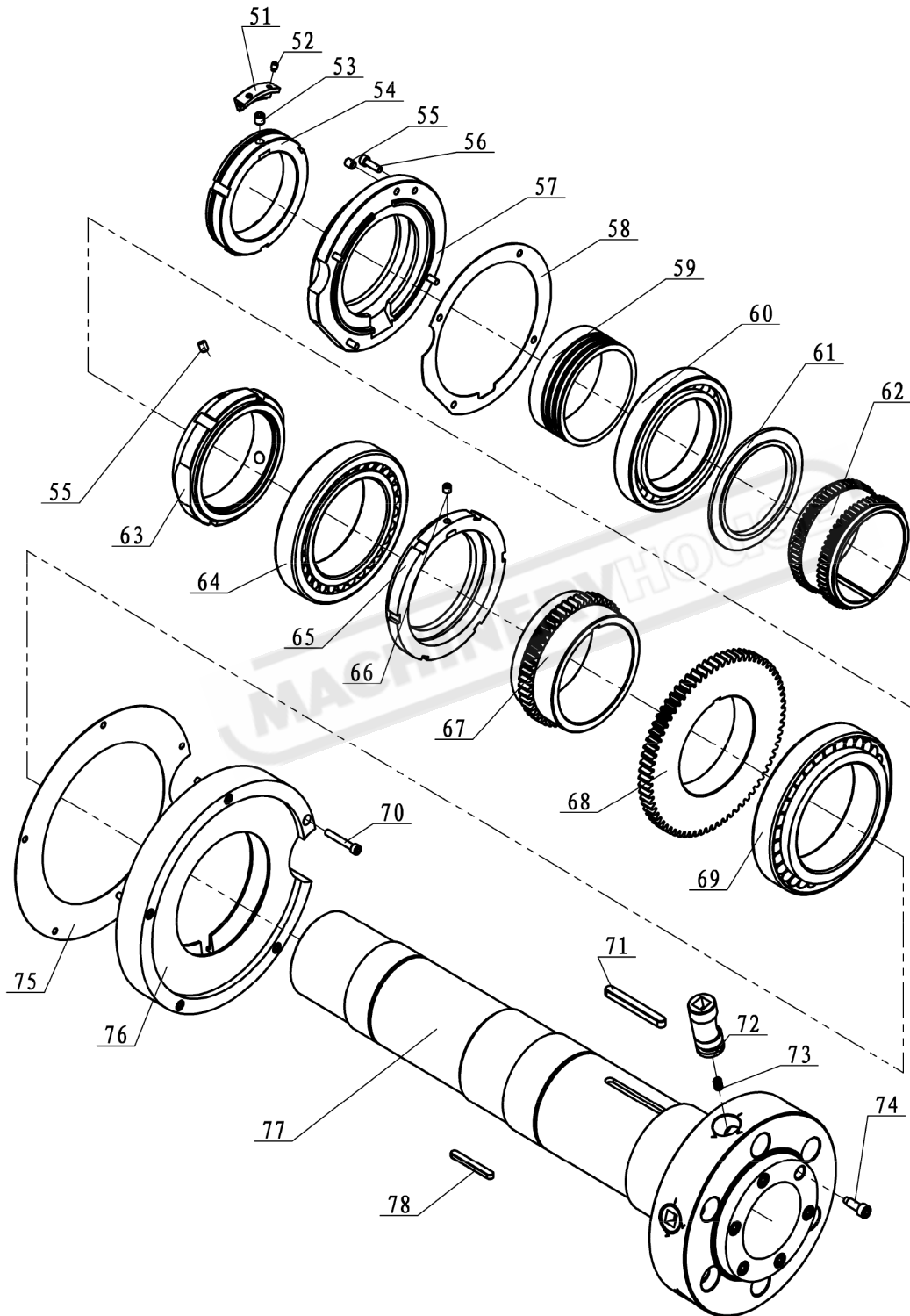
B - SHAFT DIAGRAM



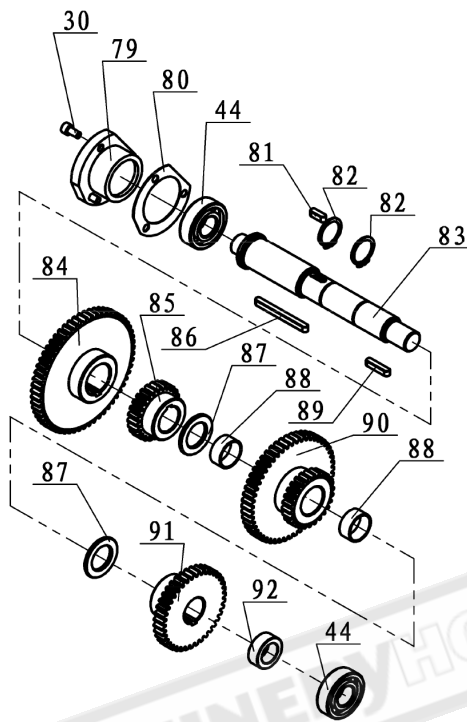
F - SHAFT DIAGRAM



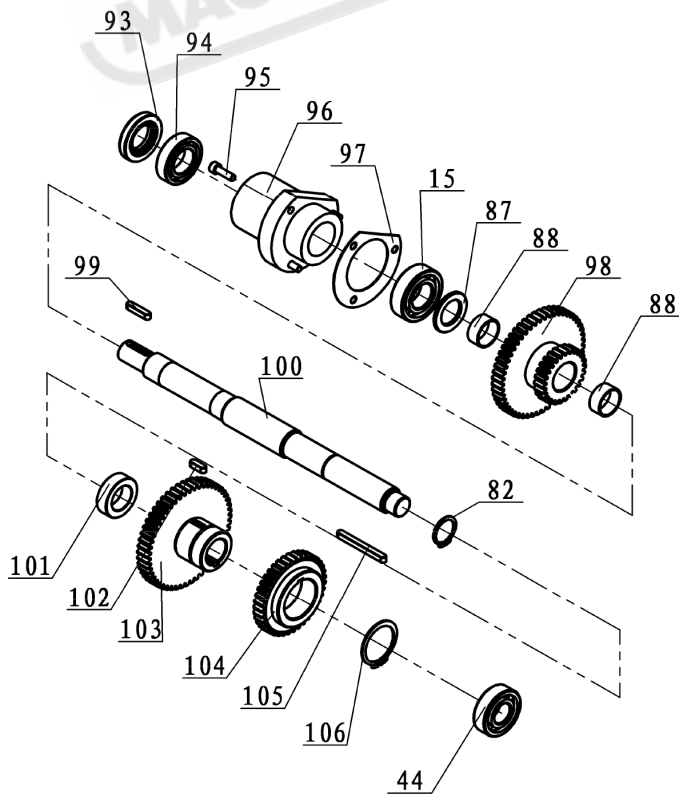
C - SHAFT DIAGRAM



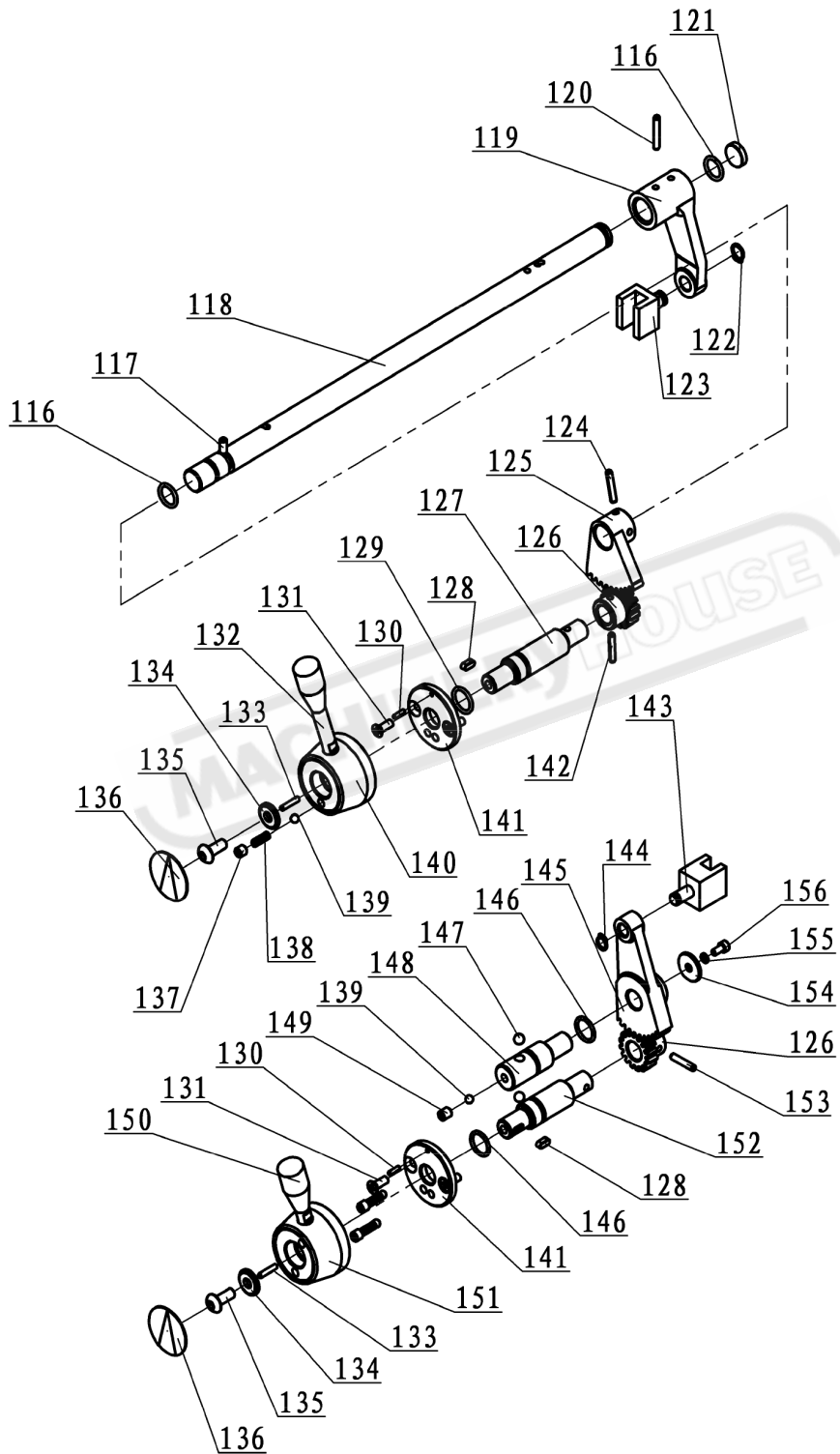
D - SHAFT DIAGRAM



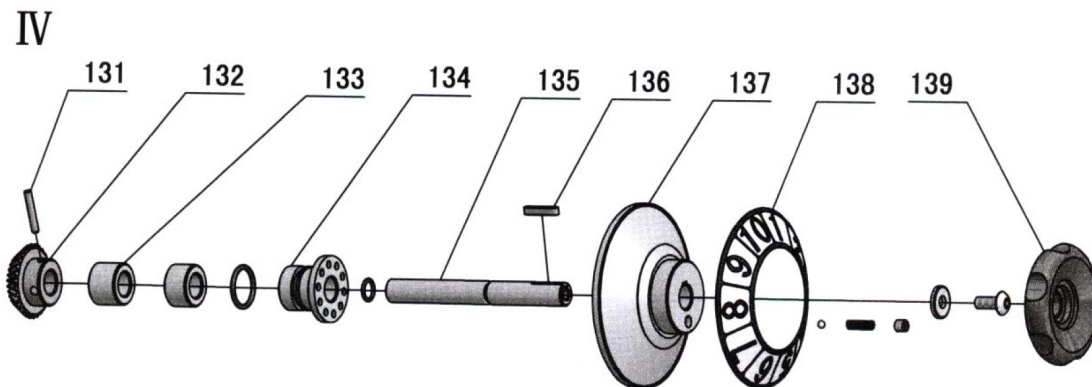
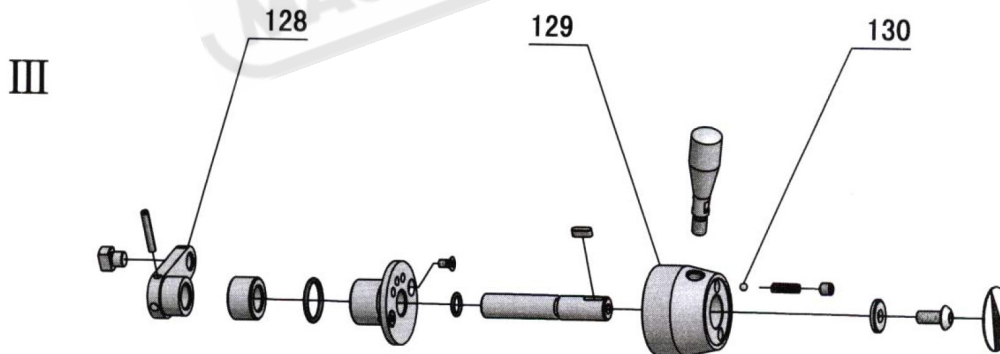
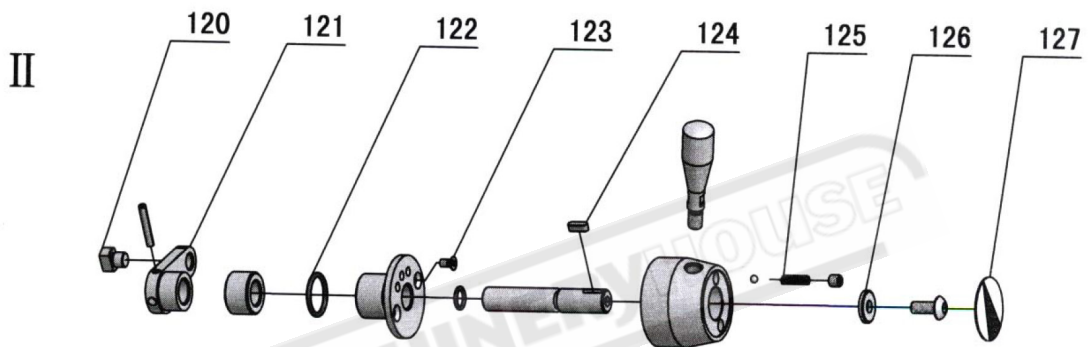
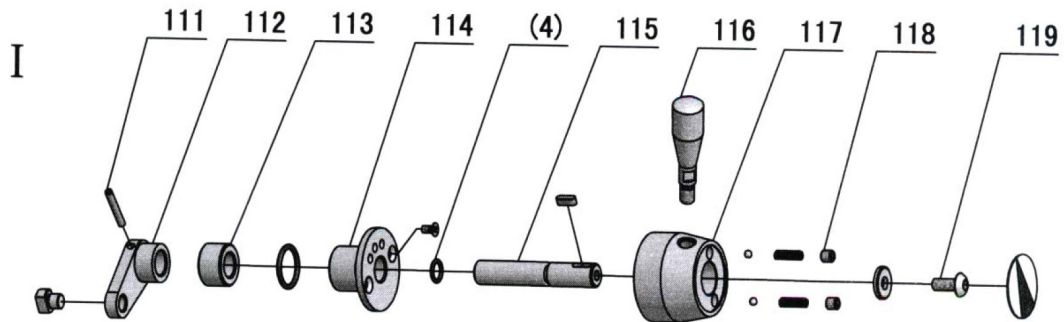
E - SHAFT DIAGRAM



II CONTROL SHAFT DIAGRAM

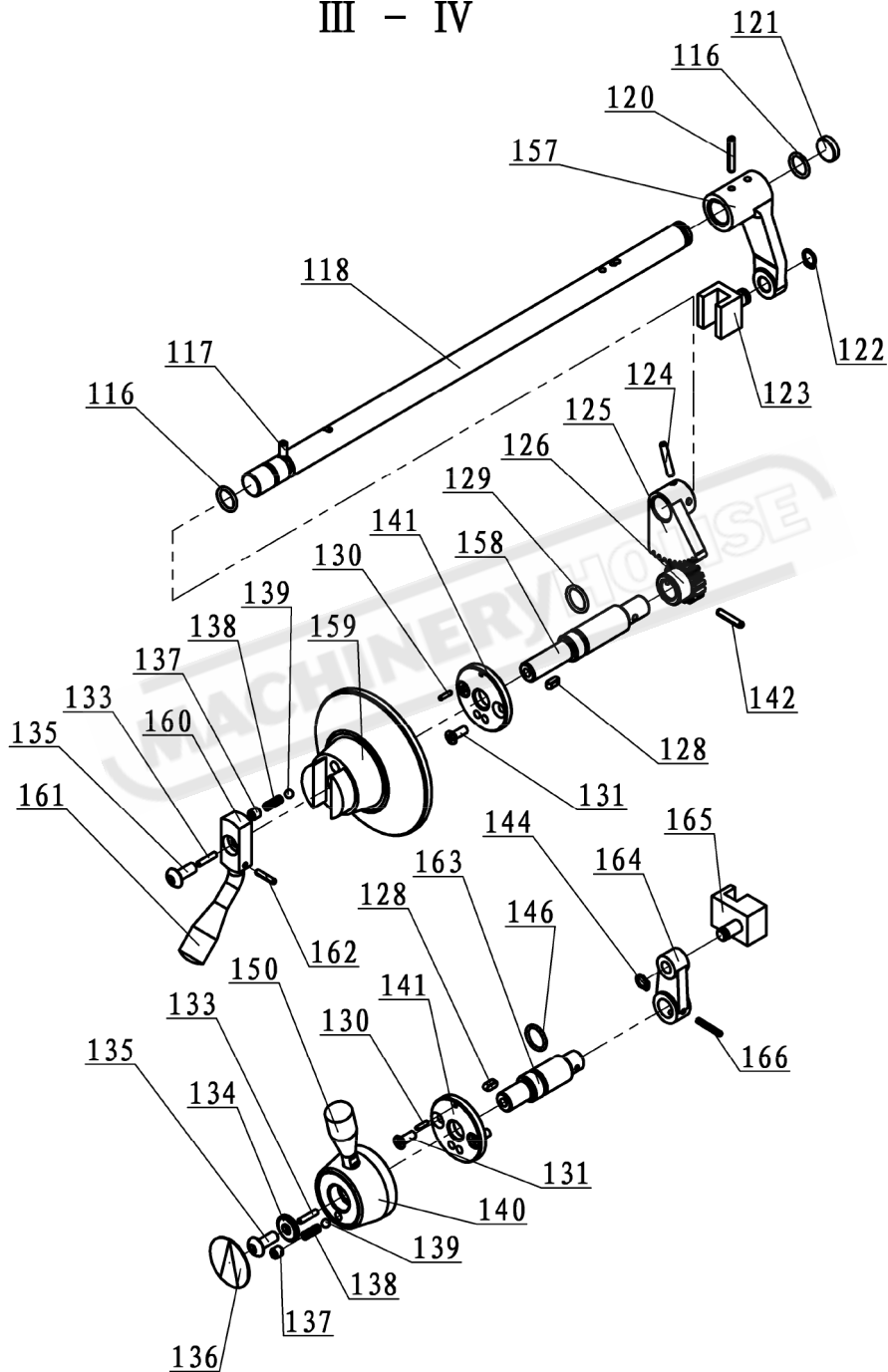


HEADSTOCK CONTROL SHAFTS

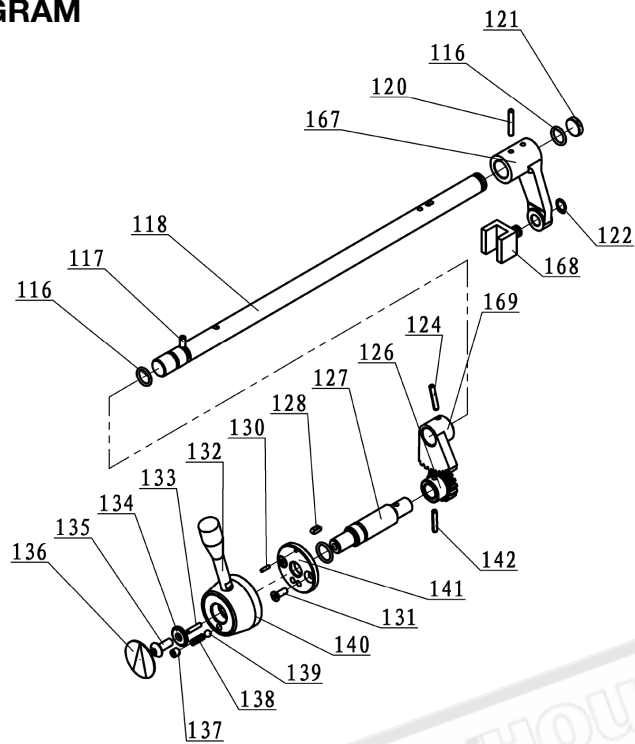


III - IV SHAFT DIAGRAMS

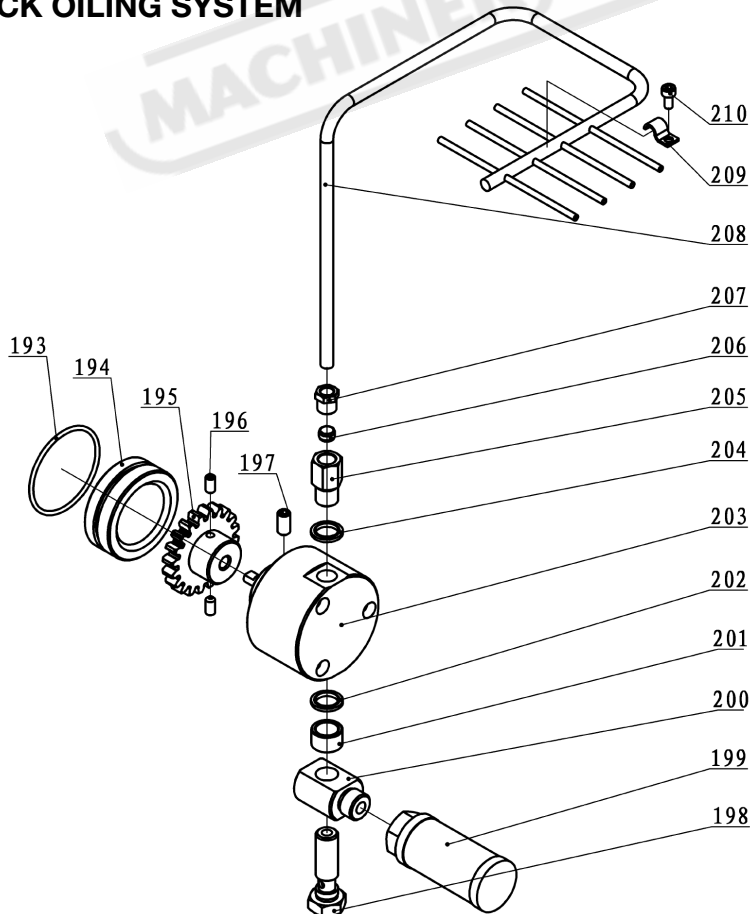
III - IV



V - SHAFT DIAGRAM



HEADSTOCK OILING SYSTEM



HEADSTOCK SPARE PARTS LIST

No.	Part No.	Description	Specification	Qty
1	GB/T 812-1988	Nut	M30×1.5	1
2	GB 858-1988	Washer	30	1
3	CR6241-01-26	Pulley		1
4		Oil Seal	TC42×55×9	1
5	GB1235-76	O-Ring	36×3.5	1
6	CR6241-01-23	Spacer		1
7	GB/T70.1-2000	Screw	M6×35	4
8	CR6241-01-24	Bearing Cover		1
9	CR6241-01-25	Bealed Mat		1
10	GB/T276-1994	Ball Bearing	6206-2Z	2
11	GB1096-79	Key	8×45	1
12	GB1096-79	Key	B8×55	1
13	CR6246B-01-07	Gear		1
14	CR6246B-01-06	Gear		1
15	GB/T276-1994	Ball Bearing	6205-2Z	4
16	CR6241-01-20	Spacer		1
17	CR6241-01-19	Shaft		1
18	CR6246B-01-08	Gear		1
19	CR6246B-01-09	Gear		1
20	CR6246B-01-10	Gear		1
21	GB/T276-1994	Ball Bearing	6007-2Z	1
22	CR6246B-01-11	Gear		1
23	CR6246B-01-12	Gear		1
24	CR6241-01-27	Shaft		1
25	GB/T276-1994	Ball Bearing	6305-2Z	2
26	CR6251-01-43	Washer		2
27	GB893.1-86	Snap Ring	62	2
28	GB/T3452.1	O-Ring	56×2.65	3
29	CR6241-01-33	Plug		3
30	GB/T70-2000	Screw	M6×12	6
31	CR6241-01-46	Cover		1
32	CR6241-01-47	Sealed Mat		1
33	CR6246B-01-18	Gear		1
34	GB1096-79	Key	8×25	1
35	CR6246B-01-19	Gear		1
36	GB/T894.1-1986	Snap Ring	50	1
37	GB/T894.1-1986	Snap Ring	48	1
38	CR6246B-01-17	Gear		1
39	CR6246B-01-16	Gear		1
40	CR6246B-01-15	Gear		1
41	GB1096-79	Key	8×35	2
42	GB/T894.1-1986	Snap Ring	34	1
43	CR6241-01-40	Shaft		1
44	GB/T276-1994	Ball Bearing	6204-2Z	5
45	CR6241-01-39	Spacer		2
46	GB/T894.1-1986	Snap Ring	75	2
47	CR6246B-01-13	Gear		1
48	CR6241-01-37	Key		2
49	CR6246B-01-14	Gear		1
50	CR6241-01-35	Shaft		1

NOTE: SOME INDIVIDUAL PARTS MAY ONLY BE AVAILABLE AS AN ASSEMBLY

HEADSTOCK SPARE PARTS LIST

No.	Part No.	Description	Specification	Qty
51	CR6251-01-82	Balance Piece		2
52	GB/T79-2000	Screw	M6×8	4
53	GB/T77-2000	Screw	M10×10	1
54	CR6251-01-05	Set Nut		1
55	GB 77-85	Screw	M8×8	3
56	GB70-86	Screw	M6×20	4
57	CR6246B-01-25	Rear Bearing Cover		1
58	CR6246B-01-26	Sealed Mat		1
59	CR6251-01-81	Cycle Oil Ring		1
60	GB/T276-1994	Ball Bearing	6020	1
61	CR6251-01-80	Oil Ring		1
62	CR6246B-01-24	Gear		1
63	CR6246B-01-27	Set Nut		1
64	GB/T297-1994	Taper Roller	32022/P5	1
65	CR6246B-01-23	Set Nut		1
66	GB 77-85	Screw	M8×8	1
67	CR6246B-01-22	Gear		1
68	CR6246B-01-21	Gear		1
69	GB/T297-1994	Taper Roller	32024/P5	1
70	GB/T70-2000	Screw	M6×40	5
71	GB1096-79	Key	10×85	1
72	CR6251-01-52	Cam Lock		6
73	CR6241-01-94	Spring		6
74	CR6251-01-53	Screw		6
75	CR6251-01-58	Sealed Mat		1
76	CR6251-01-57	Front Bearing Cover		1
77	CR6246B-01-20	Spindle		1
78	GB1567-79	Key	8×60	1
79	CR6241-01-68	Cover		1
80	CR6241-01-69	Sealed Mat		1
81	GB1096-79	Key	6×18	1
82	GB/T894.1-1986	Snap Ring	25	3
83	CR6246B-01-28	C Shaft		1
84	CR6246B-01-32	Gear		1
85	CR6246B-01-30	Gear		1
86	GB1096-79	Key	6×65	1
87	CR6241-01-16	Spacer		3
88	SF-1	Bearing	2512	4
89	GB1096-79	Key	6×28	1
90	CR6246B-01-49	Gear		1
91	CR6246B-01-31	Gear		1
92	CR6246B-01-29	Spacer		1
93		Oil Seal	TC25×47×8	1
94	GB/T276-1994	Ball Bearing	6005-2Z	1
95	GB/T70.1-2000	Screw	M6×20	3
96	CR6241-01-70	Bearing Flanged		1
97	CR6241-01-71	Sealed Mat		1
98	CR6246B-01-40	Gear		1
99	GB1096-79	Key	6×28	1
100	CR6246B-01-33	D Shaft		1

NOTE: SOME INDIVIDUAL PARTS MAY ONLY BE AVAILABLE AS AN ASSEMBLY

HEADSTOCK SPARE PARTS LIST

No.	Part No.	Description	Specification	Qty
101	CR6246B-01-41	Spacer		1
102	GB1096-79	Key	6x18	1
103	CR6246B-01-35	Gear		1
104	CR6246B-01-34	Gear		1
105	GB1096-79	Key	6x60	1
106	GB/T894.1-1986	Snap Ring	40	1
107	GB/T70.1-2000	Screw	M6x12	1
108	CR6241-01-65	Washer		1
109	GB1235-76	O-Ring	35x3.1	1
110	CR6241-01-62	Shaft		1
111	CR6241-01-63	Spacer		2
112	CR6241-01-64	Gear		1
113	GB/T894.1-1986	Snap Ring	30	1
114		Bipyramid	B1061C	1
115		Connection	15326C	1
116	GB1235-76	O-Ring	20x2.4	6
117	GB/T79-2000	Screw	M6x16	3
118	CR6246B-01-36	Shaft		3
119	CR6246B-01-44	Lever		1
120	GB879-86	Spring Pin	5x30	3
121	CR6241-01-95	Plug		3
122	GB/T894.1-1986	Snap Ring	12	3
123	CR6246B-01-37	Fork		2
124	GB879-86	Spring Pin	5x26	3
125	CR6246B-01-45	Gear		2
126	CR6241-01-76	Gear		4
127	CR6241-01-80	Shaft		2
128	GB1096-79	Key	5x12	5
129	GB1235-76	O-Ring	22x2.4	3
130	GB879-86	Spring Pin	3x12	5
131	GB819-85	Screw	M6X16	10
132	CR6241-01-86	Lever		2
133	GB/T80-2000	Screw	M4x20	5
134	CR6241-01-84	Washer		4
135	CR6241-01-97	Screw		5
136	CR6241-01-100	Plate		4
137	GB/T77-2000	Screw	M8x8	6
138	CR6241-01-82	Spring	??	6
139	GB308-84	Steel Ball	1/4"	7
140	CR6241-01-85	Lever Head		3
141	CR6241-01-83	Fix Black		5
142	GB879-86	Spring Pin	5x26	3
143	CR6241-01-12	Fork		1
144	GB/T894.1-1986	Snap Ring	10	2
145	CR6246B-01-46	Lever		1
146	GB1235-76	O-Ring	22x2.4	3
147	GB308-84	Steel Ball	8	2
148	CR6246B-01-48	Shaft		1
149	GB/T80-2000	Screw	M8x10	1
150	CR6241-02-62	Lever		2

NOTE: SOME INDIVIDUAL PARTS MAY ONLY BE AVAILABLE AS AN ASSEMBLY

HEADSTOCK SPARE PARTS LIST


No.	Part No.	Description	Specification	Qty
151	CR6241-01-91	Handle		1
152	CR6246B-01-43	Shaft		1
153	GB879-86	Spring Pin	5x26	1
154	CR6246B-01-50	Washer		1
155	GB/T93-1987	Washer	5	1
156	GB70-85	Screw	M5x10	1
157	CR6246B-01-47	Lever		1
158	CR6241-01-81	Shaft		1
159	CR6241-01-88	Handel		1
160	CR6241-01-89	Fix Bracket		1
161	CR6241-01-90	Lever		1
162	GB879-86	Spring Pin	4x20	1
163	CR6246B-01-42	Shaft		1
164	CR6241-01-11	Lever		1
165	CR6246B-01-39	Fork		1
166	GB879-86	Spring Pin	4x26	1
167	CR6251-01-27	Lever		1
168	CR6246B-01-38	Fork		1
169	CR6251-01-15	Gear		1
170	SB4032-65	Plug	20	1
171	SB4010-65	Tube Fitting	20	1
172	G38-3A	Oil Plug	Z3/8	1
173	GB/T93-1987	Washer	16	2
174	GB/T70-2000	Screw	M16x50	2
175	GB119-86	Pin	8x65	1
176	GB/T79-2000	Screw	M10x20	1
177	GB/T70-2000	Screw	M10x90	1
178	GB1160.2	Oil Sight Glass	A20	1
179	GB/T77-2000	Screw	M8x25	1
180	CR6246B-01-05	Cover Dress		1
181	CR6246B-01-02	Headstock Cover		1
182	GB/T70-2000	Screw	M8x30	5
182	GB/T70-2000	Screw	M8x35	2
183	CR6246B-01-03	Sealed Mat		1
184	CR6251L-01-01	Headstock Casting		1
185	GB/T120.1-2000	Pin	16x55	1
186	GB/T70-2000	Screw	M16x45	2
187	CR6241A-01-02	Apron		1
188	GB/T70-2000	Screw	M6x12	2
189	CR6241A-01-03	Clamp		1
190	GB/T70-2000	Screw	M16x65	1
191	CR6246B-01-51	Plate		1
192	CR6246B-01-04	Plate		1
193	GB3452.1-82	O-Ring	56x2.65	1
194	CR6241-01-33	Plug		1
195	CR6251-01-91	Gear		1
196	GB/T80-2000	Screw	M6x12	2
197	GB/T80-2000	Screw	M8x16	1
198	CR6251-01-96	Connection	M14	1
199	WU-16-180-J	Fuel Filter	WU-16-180-J	1

NOTE: SOME INDIVIDUAL PARTS MAY ONLY BE AVAILABLE AS AN ASSEMBLY

HEADSTOCK SPARE PARTS LIST

No.	Part No.	Description	Specification	Qty
200	CR6251-01-95	Connection	M18	1
201	CR6251-01-94	Spacer		1
202	G52-2	Sealing Washer	14	1
203	SNBY2.5-0.5	Pump	SNBY2.5-0.5	1
204	G52-2	Sealing Washer	14	1
205	CR6251-01-93	Connection		1
206	B145C	Bipyramid	B145C	1
207	25567	Connection	25567	1
208	CR6251-01-08	Oil Pipe		1
209		Pipe Clip	25594-1	1
210	GB/T70.1-2000	Screw	M5×10	1
211	CR6241-01-98	Plate		1
212		Oil Sight Glass	M27x1.5	1



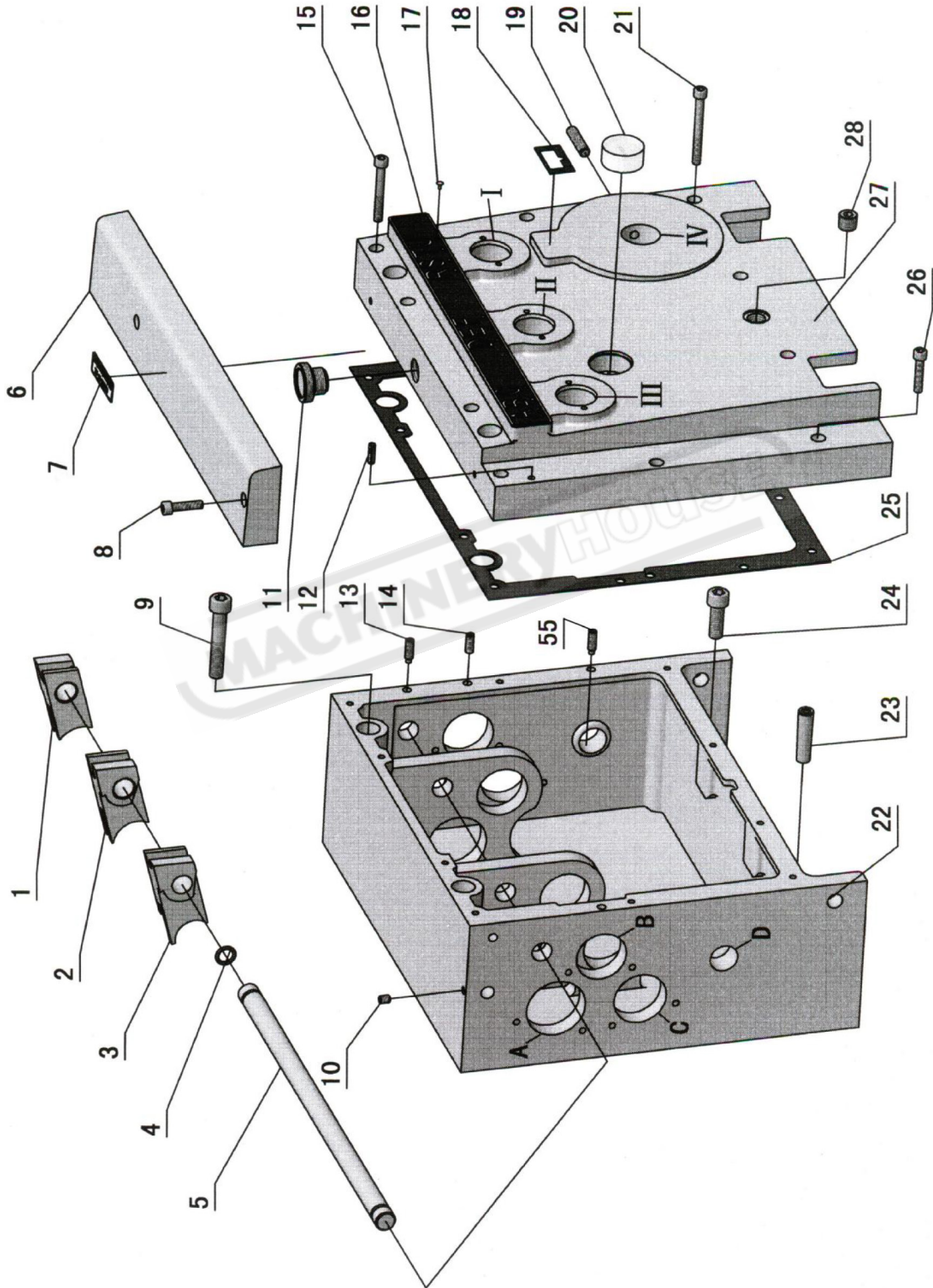


WARNING

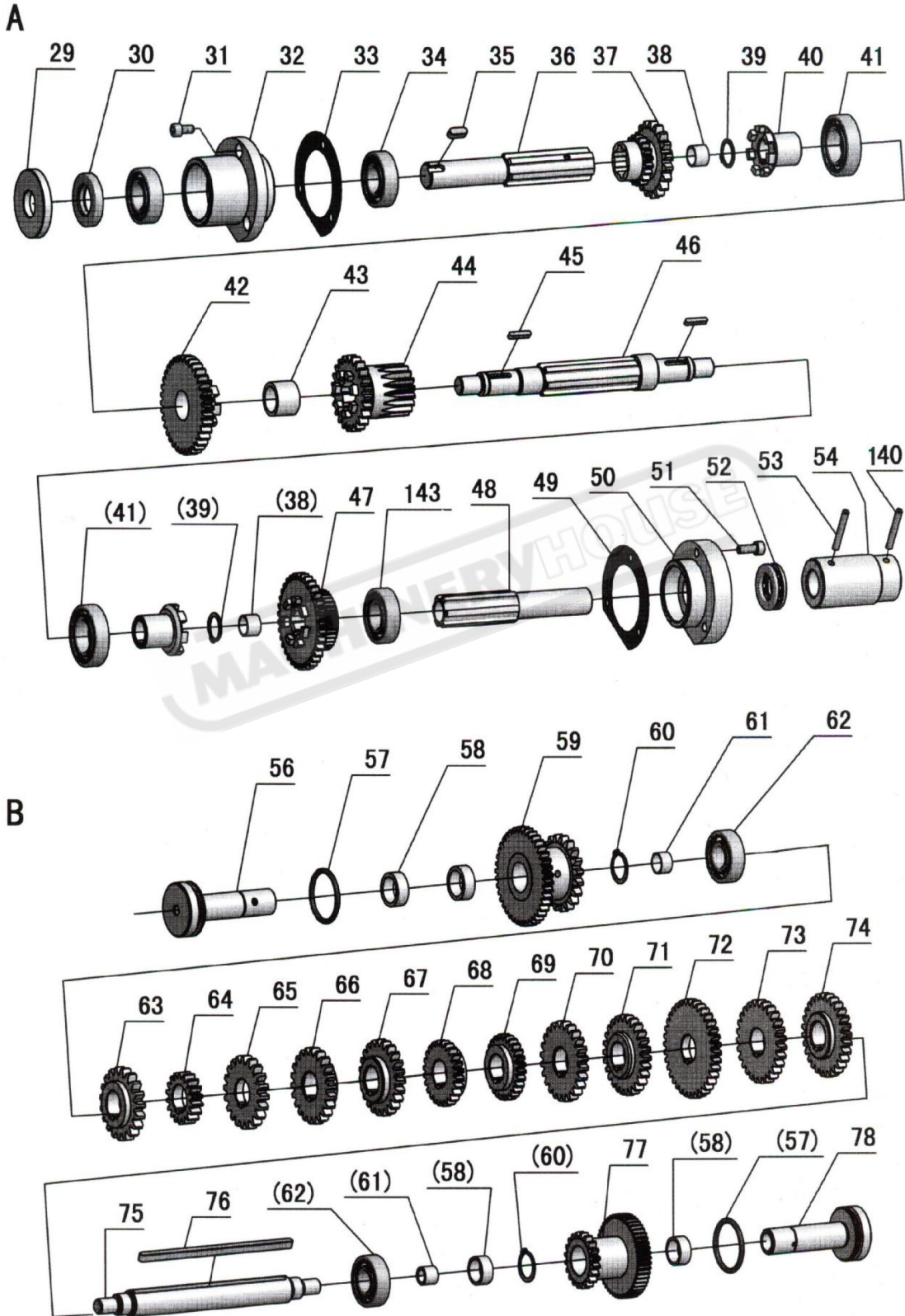
*Disconnect all power from the machine before servicing.
There may be multiple power sources present.
Remove the plug from the power point or remove the
fuse if hardwired. Failure to do may cause death or injury.*

NOTE: SOME INDIVIDUAL PARTS MAY ONLY BE AVAILABLE AS AN ASSEMBLY

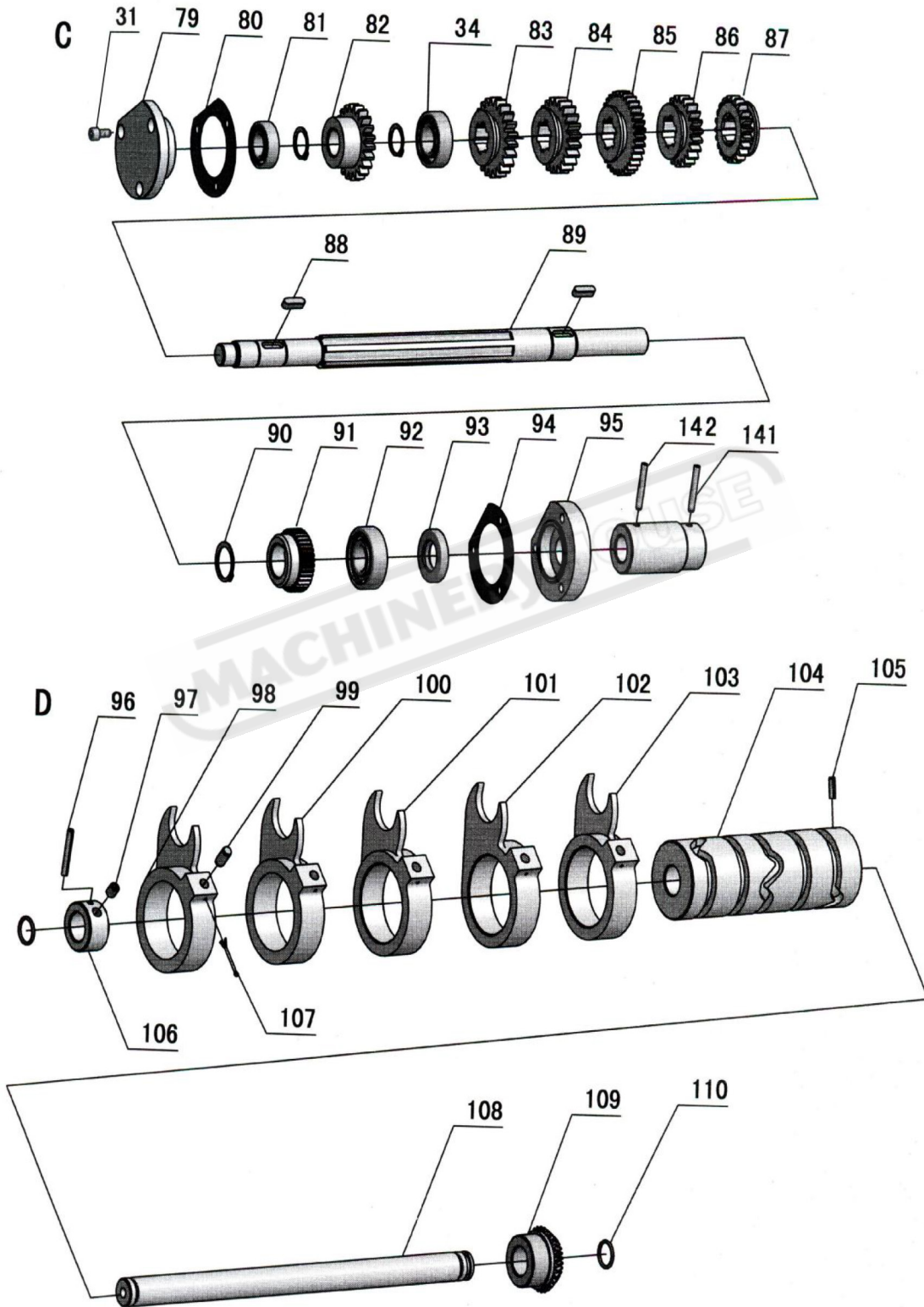
GEARBOX DIAGRAMS



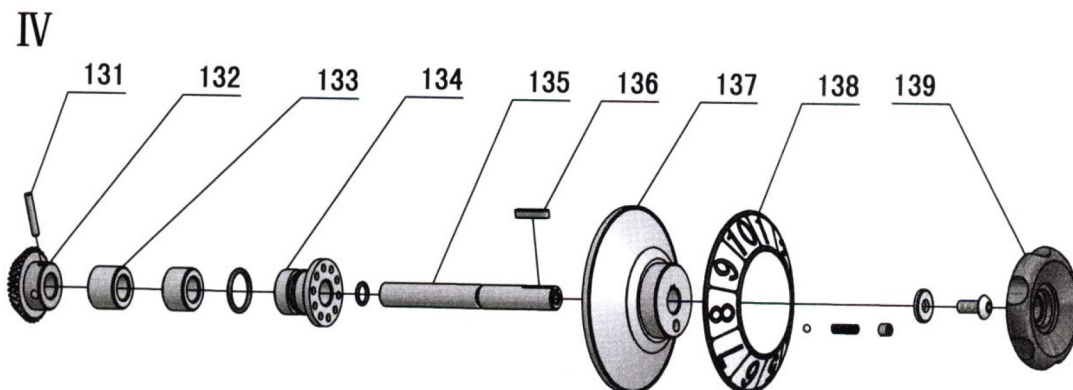
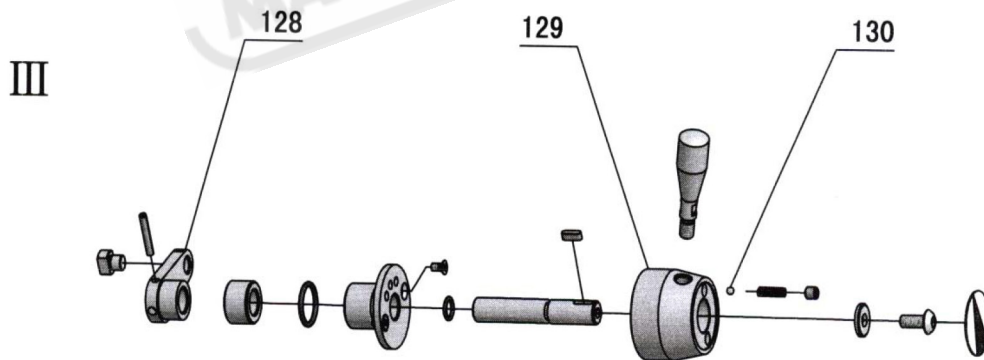
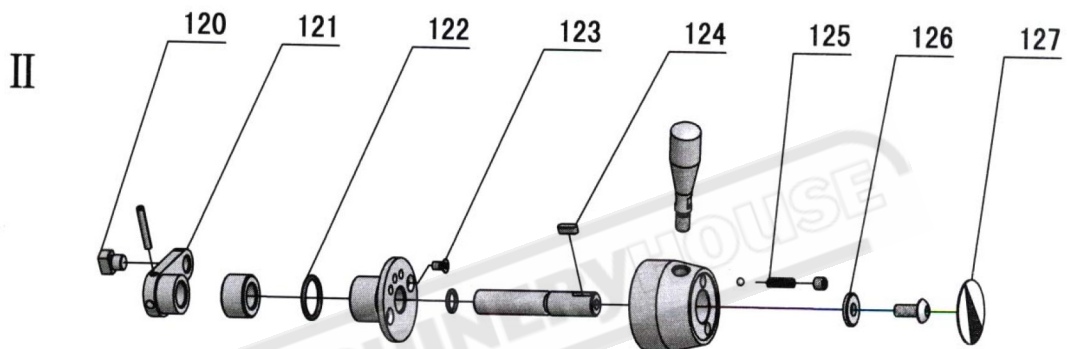
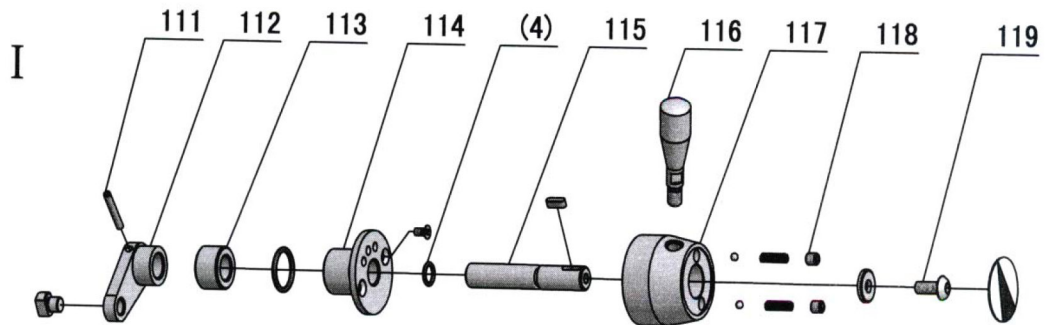
GEARBOX A & B SHAFT DIAGRAMS



GEARBOX C & D SHAFT DIAGRAMS



GEARBOX I - IV SHAFT DIAGRAMS



GEARBOX SPARE PARTS LIST

No.	Part No.	Description	Specification	Qty
1	CR6241-02-10	Fork		1
2	CR6241-02-71	Fork		1
3	CR6241-02-72	Fork		1
4	GB1235-76	O-Ring	16x2.4	6
5	CR6241-02-78	Shaft		1
6	CR6246B-02-01	Top Cover		1
7	CR6241-01-102	Plate		1
8	GB70-85	Screw	M6x28	2
9	GB70-85	Screw	M10x45	2
10	GB78-85	Screw	M6x8	1
11	CR6241-03-42	Oil Cover		1
	CR6241-03-43	Plate		1
12	GB879-86	Spring Pin	5x16	2
13	GB78-85	Socket Set Screw	M6x16	1
14	GB78-85	Screw	M6x16	2
15	GB70-85	Screw	M6x50	4
16	CR6251T-02-06	Plate		1
17	GB827-86	Rivet	2x5	14
18	CR6241-02-80	Plate		1
19	GB78-85	Screw	M8x35	1
20	GB1160.2-89	Oil Sight Glass	A20	1
21	GB70-85	Screw	M6x60	3
22	CR6251T-02-04	Gear Box		1
23	GB118-86	Taper Pin	8x50	2
24	GB70-85	Screw	M10x45	2
25	CR6251T-02-05	Sealed Mat		1
26	GB70-85	Screw	M6x30	3
27	CR6241A-02-01	Front Cover		1
28	G38-3A	Oil Plug	Z 3/8"	1
29	CR6241-02-60	Spacer		1
30		Oil-Seal	TC20x42x8	1
31	GB70-85	Socket Head Cap Screw	M6x12	6
32	CR6241-02-58	Cap		1
33	CR6241-02-59	Sealed Mat		1
34	GB278-89	Ball Bearing	80104	3
35	GB1096-79	Key	6x10	1
36	CR6241-02-57	B-Shaft		1
37	CR6241-02-56	Gear		1
38	SF-1	Ball Bearing	1410	2
39	GB894.1-86	Snap Ring	18	2
40	CR6241-02-55	Clutch		2
41	GB278-89	Ball Bearing	80105	2
42	CR6241-02-54	Gear		1
43	SF-1	Ball Bearing	2020	1
44	CR6241-02-53	Gear		1
45	GB1096-79	Key	4x20	2
46	CR6241-02-52	A-Shaft		1
47	CR6241-02-06	Gear		1
48	CR6241-02-51	C-Shaft		1
49	CR6241-02-50	Sealed Mat		1
50	CR6241-02-49	Cap		1

NOTE: SOME INDIVIDUAL PARTS MAY ONLY BE AVAILABLE AS AN ASSEMBLY

GEARBOX SPARE PARTS LIST Cont.

No.	Part No.	Description	Specification	Qty
51	GB70-85	Socket Cap Screw	M6×20	6
52	GB301-84	Thrust Bearing	8104	1
53	GB879-86	Spring Pin	5×35	1
54	CR6241-02-21	Collar-Linkage		2
55	GB79-85	Socket Set Screw	M6×20	1
56	CR6241-02-33	E-Shaft		1
57	GB3452.1-82	O-Ring	35.5×3.55	2
58	SF-1	Ball Bearing	2012	4
59	CR6241-02-34	Gear		1
60	GB894.1-86	Snap Ring	20	4
61	SF-1	Ball Bearing	1218	2
62	GB278-89	Ball Bearing	80203	2
63	CR6241-02-36	Gear		1
64	CR6241-02-37	Gear		1
65	CR6241-02-38	Gear		1
66	CR6241-02-39	Gear		1
67	CR6241-02-40	Gear		1
68	CR6241-02-41	Gear		1
69	CR6241-02-42	Gear		1
70	CR6241-02-43	Gear		1
71	CR6241-02-44	Gear		1
72	CR6241-02-45	Gear		1
73	CR6241-02-46	Gear		1
74	CR6241-02-47	Gear		1
75	CR6241-02-35	D-Shaft		1
76	GB1096-79	Key	6×146	1
77	CR6241-02-05	Gear		1
78	CR6241-02-48	F-Shaft		1
79	CR6241-02-31	Cap		1
80	CR6241-02-32	Sealed Mat		1
81	GB278-89	Ball Bearing	80103	1
82	CR6241-02-29	Gear		1
83	CR6241-02-28	Gear		1
84	CR6241-02-27	Gear		1
85	CR6241-02-26	Gear		1
86	CR6241-02-25	Gear		1
87	CR6241-02-24	Gear		1
88	GB1096-79	Key	6×20	2
89	CR6241-02-30	G-Shaft		1
90	GB894.1-86	Snap Ring	25	1
91	CR6241-02-04	Gear		1
92	GB279-88	Ball Bearing	180204	1
93		Oil Seal	TC20×40×7	1
94	CR6241-02-23	Sealed Mat		1
95	CR6241-02-22	Cap-Right		1
96	GB879-86	Spring Pin	5×35	1
97	GB78-85	Socket Set Screw	M8×10	1
98	CR6241-02-17	Claw-Shifter		1
99	GB119-86	Pin	B8×16	5
100	CR6241-02-16	Claw-Shifter		1

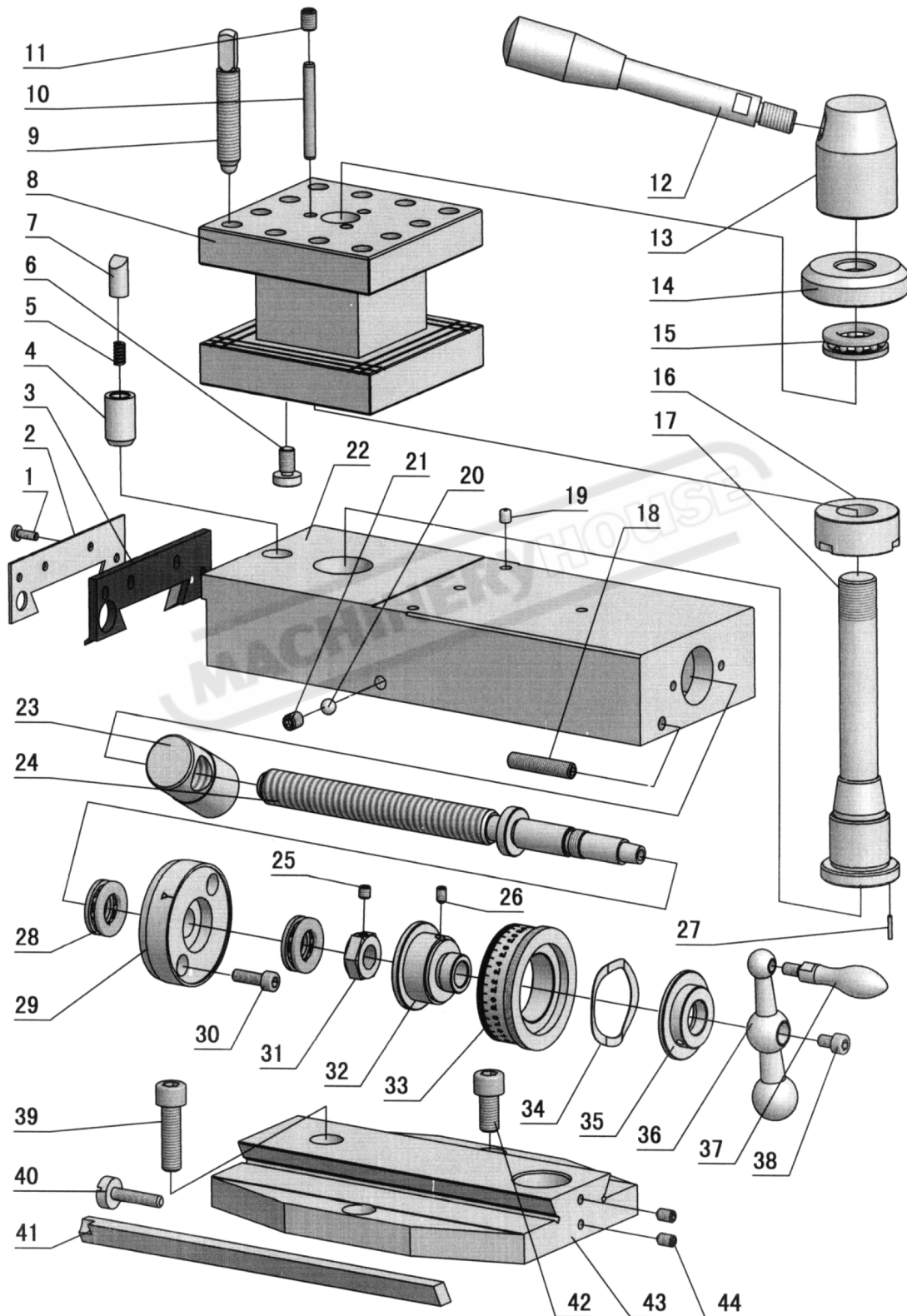
NOTE: SOME INDIVIDUAL PARTS MAY ONLY BE AVAILABLE AS AN ASSEMBLY

GEARBOX SPARE PARTS LIST Cont.

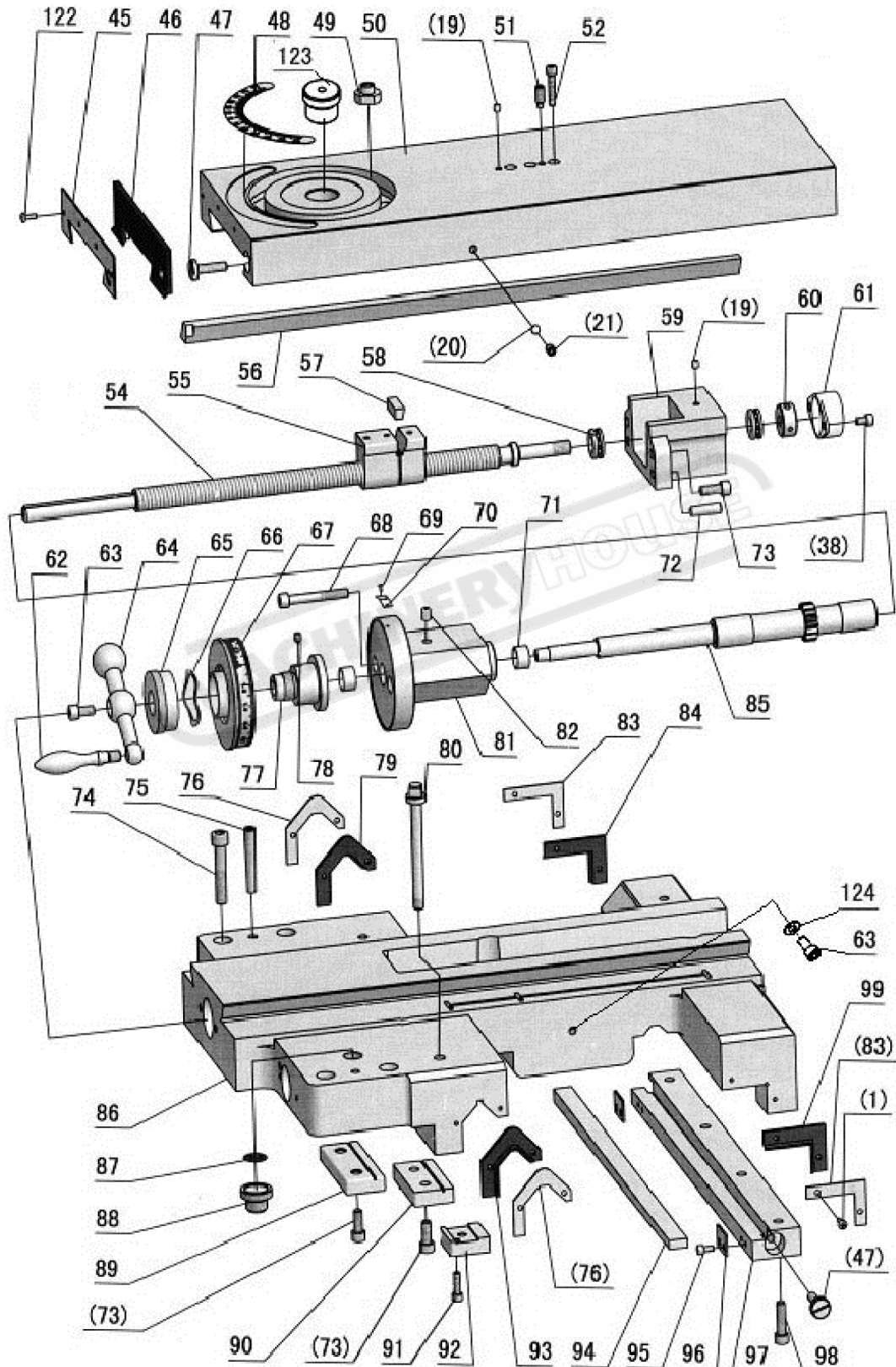
No.	Part No.	Description	Specification	Qty
101	CR6241-02-15	Claw-Shifter		1
102	CR6241-02-14	Claw-Shifter		1
103	CR6241-02-13	Claw-Shifter		1
104	CR6241-02-18	Cam		1
105	GB879-86	Spring Pin	5x16	2
106	CR6241-02-19	Fixed Ring		1
107	GB91-86	Split Pin	2x30	5
108	CR6241-02-20	Cam Shaft		1
109	CR6241-02-12	Bevel Gear		1
110	GB1235-76	O-Ring	22x2.4	2
111	GB879-86	Spring Pin	5x30	3
112	CR6241-02-68	Arm		1
113	CR6241-02-09	Spacer		4
114	CR6241-02-76	Detent Plate		3
115	CR6241-02-11	Shaft		3
116	CR6241-02-62	Lever		3
117	CR6241-02-77	Speed Change Handle		1
118	GB77-85	Screw	M8x8	5
119	CR6241-01-97	Screw		4
120	CR6241-02-74	Fork		3
121	CR6241-02-69	Arm		1
122	GB1235-76	O-Ring	30x3.1	4
123	GB819-85	Screw	M5x10	6
124	GB1096-79	Key	5x14	3
125	CR6241-01-82	Spring		5
126	CR6241-01-84	Washer		4
127	CR6241-01-100	Plate		3
128	CR6241-02-70	Arm		1
129	CR6241-02-67	Speed Change Handle		2
130	GB308-77	Steel Ball	1/4"	5
131	GB879-76	Spring Pin	5x30	1
132	CR6241-02-63	Bevel Gear		1
133	CR6241-02-65	Spacer		1
134	CR6241-02-64	Shaft Sleeve		1
135	CR6241-02-07	Shaft		1
136	GB1096-79	Key	5x28	1
137	CR6241-02-66	Selecting Dial		1
138	CR6241-02-81	Plate		1
139	CR6241-02-61	Wheel		1
140	CR6241-06-63	Pin		1
141	CR6241-06-63	Pin		1
142	GB879-86	Spring Pin	5x35	1
143	GB279-88	Ball Bearing	180104	1

NOTE: SOME INDIVIDUAL PARTS MAY ONLY BE AVAILABLE AS AN ASSEMBLY

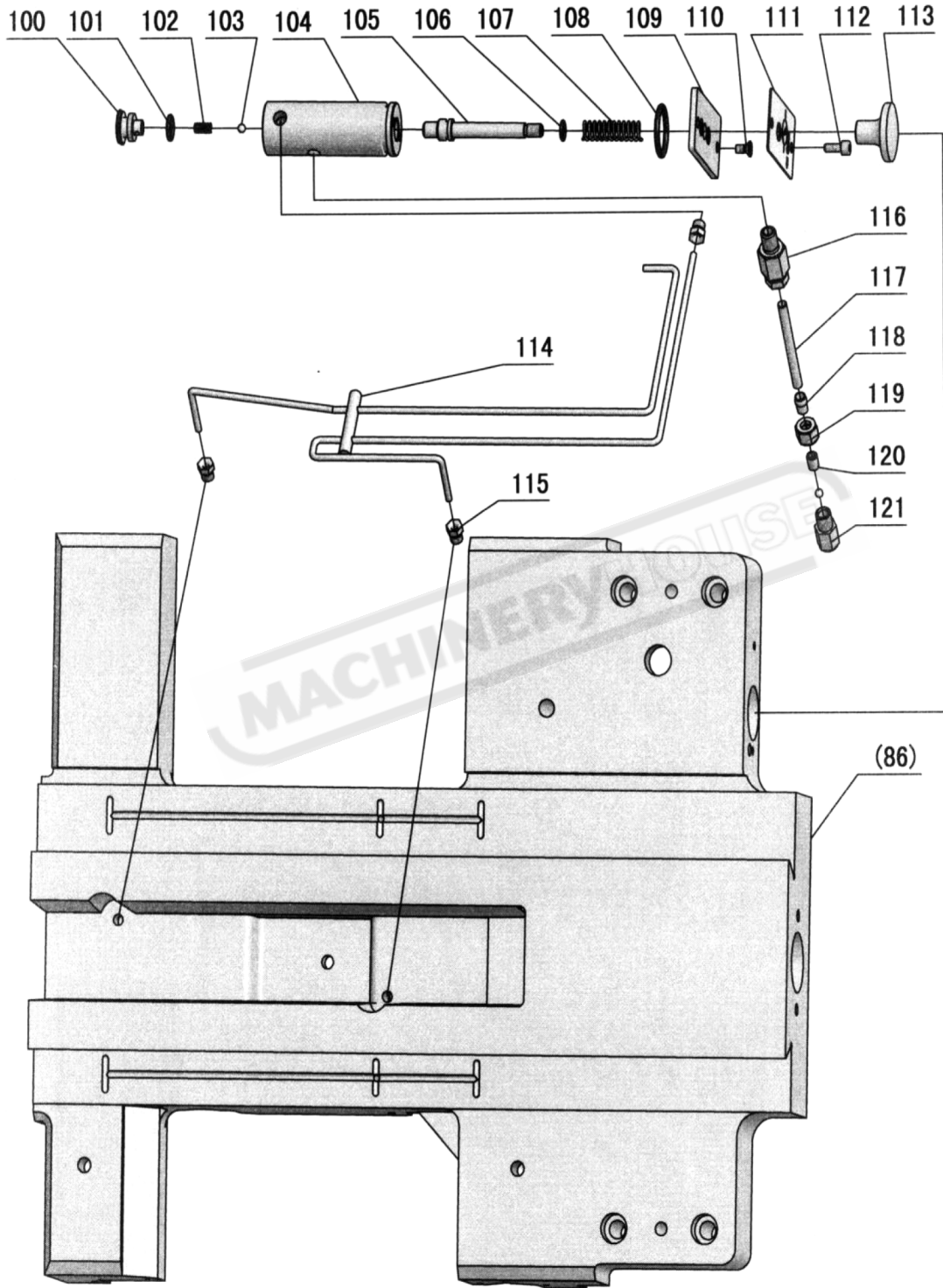
SADDLE PARTS DIAGRAMS



SADDLE PARTS DIAGRAMS Cont.



SADDLE PARTS DIAGRAMS Cont.



SADDLE SPARE PARTS LIST

No.	Part No.	Description	Specification	Qty
1	GB818-85	Screw	M4×12	12
2	CR6241-03-28	Case-Wiper		1
3	CR6241-03-27	Wiper		1
4	CR6241-03-57	Sleeve		1
5	GB2089-80	Spring	1×5×18	1
6	CR6241-03-60	Adjust Screw (Flat Type)		3
7	CR6241-03-58	Round Pin		1
8	CR6241-03-26	Four Way Tool Post (Flat Type)		1
8	CR6241-03-77	Four Way Tool Post (T Type)		1
8	CR6241-03-78	Block-Tee (T Type)		1
9	GB83-88	Screw	M12×55	12
10	GB119-86	Pin (Flat Type)	D6×50	3
11	GB77-85	Screw (Flat Type)	M8×10	3
12	CR6241-03-63	Clamping Handle		1
13	CR6241-03-62	Clamping Handle		1
14	CR6241-03-61	Washer		1
15	GB301-84	Thrust Bearing	8104	1
16	CR6241-03-59	Sleeve (Flat Type)		1
17	CR6241-03-25	Tool Post Shaft (Flat Type)		1
17	CR6241-03-76	Tool Post Shaft (T Type)		1
18	GB77-85	Screw	M8×40	1
19	GB1155-79	Ball Cup	6	6
20	GB308-84	Steel Ball	1/4"	2
21	GB80-85	Screw	M8×10	2
22	CR6241-03-23	Compound Rest (Flat Type)		1
22	CR6241-03-75	Compound Rest (T Type)		1
23	CR6241-03-48	Nut (Metric)		1
23	CR6241-03-48Y	Nut (Inch)		1
24	CR6241-03-47	Screw-Compound Rest (Metric)		1
24	CR6241-03-47Y	Screw-Compound Rest (Inch)		1
25	GB80-85	Screw	M6×6	1
26	GB80-85	Screw	M5×8	1
27	GB879-86	Spring Pin	2×12	1
28	GB301-84	Thrust Bearing	8102	2
29	CR6241-03-49	Seat Compound Rest Screw		1
30	GB70-85	Screw	M6×20	2
31	CR6241-03-50	Nut		1
32	CR6241-03-51	Collar		1
33	CR6241-03-52	Dial-Compound Rest (Metric)		1
33	CR6241-03-52Y	Dial-Compound Rest (Inch)		1
34	CR6241-03-54	Wave Type Washer		1
35	CR6241-03-53	Nut		1
36	CR6241-03-55	Handle		1
37	CR6241-03-56	Handle		1
38	GB70-85	Screw	M6×10	3
39	GB70-85	Screw	M10×85	1
40	CR6241-03-45	Screw		1
41	CR6241-03-24	Gib		1
42	GB70-85	Screw	M10×35	2
43	CR6250-03-22	Swivel Table		1
44	GB80-85	Screw	M6×10	2
45	CR6241-03-21	Case-Wiper		1

NOTE: SOME INDIVIDUAL PARTS MAY ONLY BE AVAILABLE AS AN ASSEMBLY

SADDLE SPARE PARTS LIST Cont.

No.	Part No.	Description	Specification	Qty
46	CR6241-03-20	Wiper		1
47	CR6241-03-44	Screw		4
48	CR6241-03-03	Indicator Dial		1
49	CR6241-03-46	Nut		3
50	CR6241-03-02	Cover-Cross Sliding		1
51	GB79-85	Screw	M8x20	1
52	GB70-85	Screw	M6x30	3
54	CR6241-03-17Y	Cross Feed Screw (Inch)		1
54	CR6241-03-17	Cross Feed Screw (Metric)		1
55	CR6241-03-04	Nut (Metric)		1
55	CR6241-03-04Y	Nut (Inch)		1
56	CR6241-03-19	Gib		1
57	CR6241-03-32	Gib		1
58	GB301-84	Thrust Bearing	8101	2
59	CR6241-03-05	Bracket		1
60	CR6241-03-33	Nut		1
61	CR6241-03-30	Cover		1
62	CR6241-03-41	Handle		1
63	GB70-85	Screw	M8x16	2
64	CR6241-03-40	Handle		1
65	CR6241-03-39	Nut		1
66	CR6241-03-37	Wave Type Washer		1
67	CR6241-03-18	Cross Feed Dial (Metric)		1
67	CR6241-03-18Y	Cross Feed Dial (Inch)		1
68	GB70-85	Screw	M8x60	2
69	GB827-86	Rivet	2x5	4
70	CR6241-05-28	Plate		2
71	SF-1	Bearing	1810	2
72	GB118-86	Taper Pin	6x26	2
73	GB70-85	Screw	M8x20	6
74	GB70-85	Screw	M10x55	4
75	GB118-86	Taper Pin	8x60	2
76	CR6241-03-11	Case-Wiper		2
77	CR6241-03-38	Clutch-Dial		1
78	GB80-85	Screw	M6x8	1
79	CR6241-03-09	Wiper		1
80	CR6241-03-74	Bolt		1
81	CR6241-03-36	Bracket		1
82	GB1155-79	Ball Cup	8	1
83	CR6241-03-08	Case-Wiper		2
84	CR6241-03-06	Wiper		1
85	CR6241-03-35	Cross Feed Pinion		1
86	CR6241-03-01	Saddle		1
87	CR6241-03-43	Plate		1
88	CR6241-03-42	Plug-Oil Inlet		1
89	CR6241-03-16	Gib-Front		1
90	CR6241-03-15	Gib-Left-Front		1
91	GB70-85	Screw	M6x20	1
92	CR6241-03-34	Clamp-Carriage		1
93	CR6241-03-10	Wiper		1
94	CR6241-03-12	Gib		1
95	GB70-85	Screw	M5x8	4

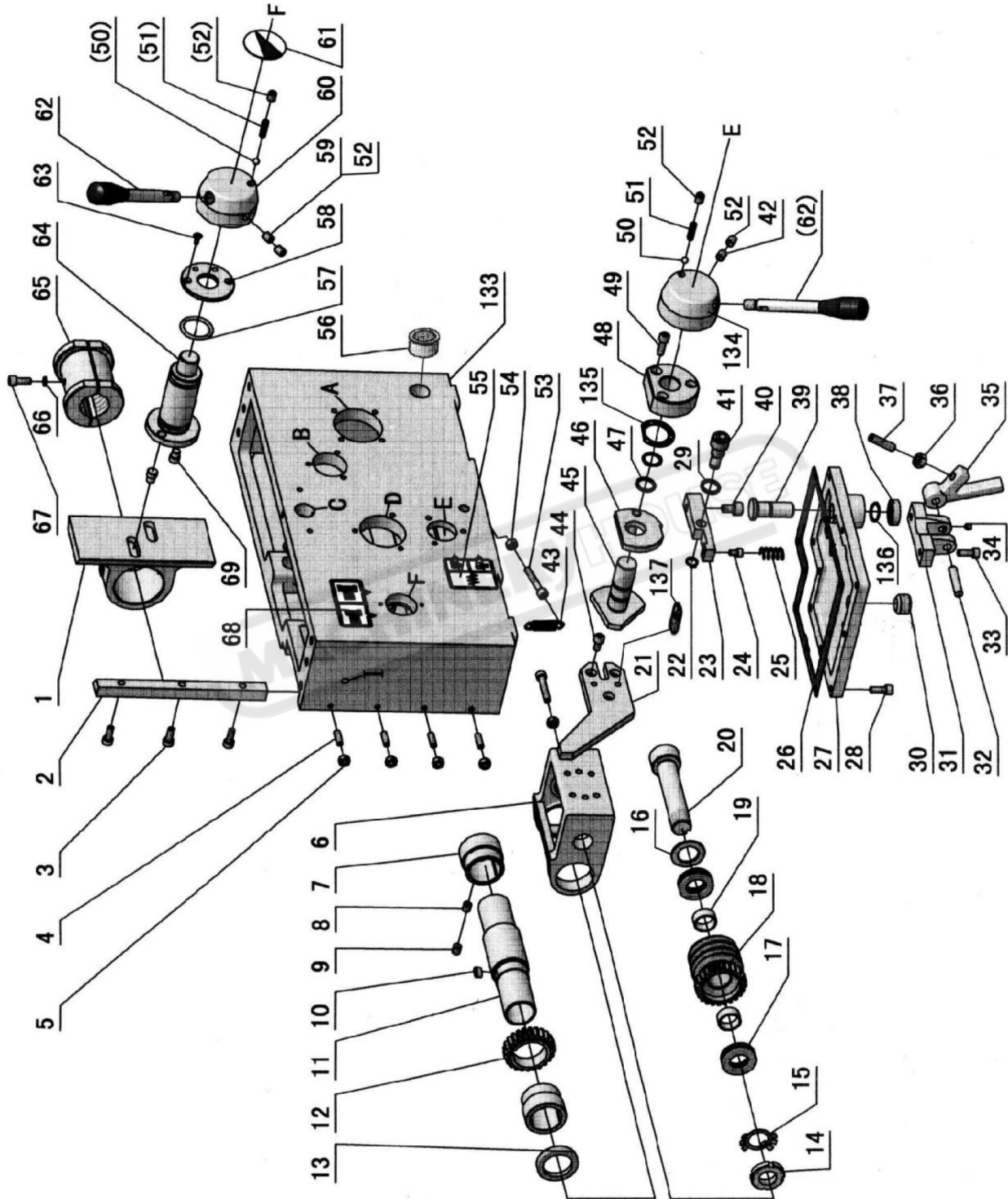
NOTE: SOME INDIVIDUAL PARTS MAY ONLY BE AVAILABLE AS AN ASSEMBLY

SADDLE SPARE PARTS LIST Cont.

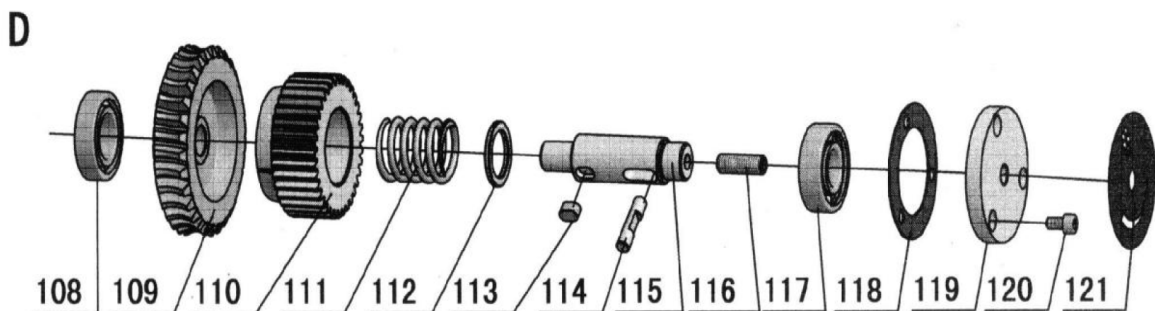
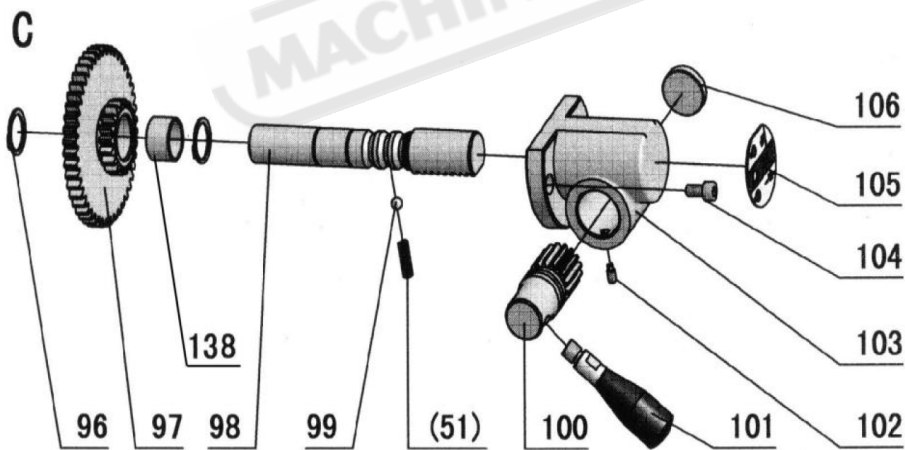
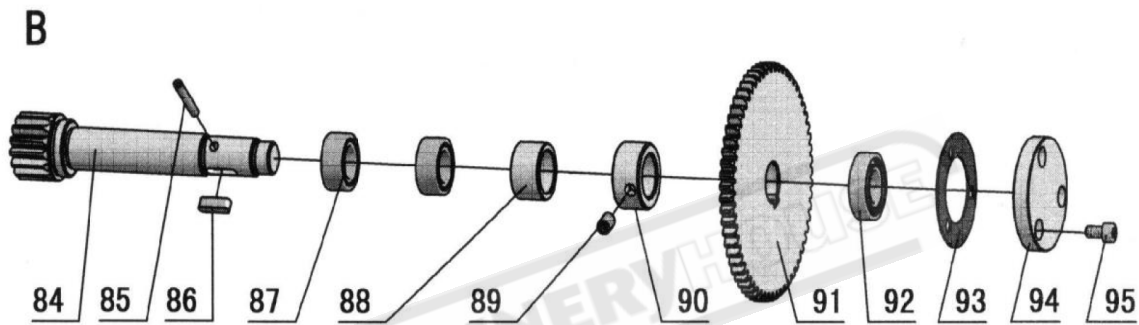
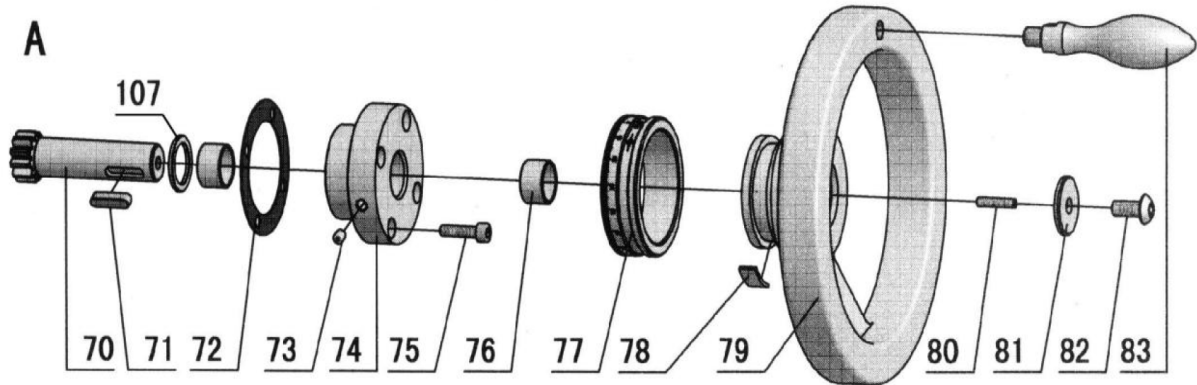
No.	Part No.	Description	Specification	Qty
96	CR6241-03-14	Baffle		2
97	CR6241-03-13	Holder Gib		1
98	GB70-85	Screw	M8x30	4
99	CR6241-03-07	Wiper		1
100	CR6241-03-70	Oil Plug		1
101	GB1235-76	O-Ring	16x2.4	1
102	GB2089-80	Spring	0.5x4.5x16	1
103	GB308-84	Steel Ball	∅5	2
104	CR6241-03-64	Body Pump		1
105	CR6241-03-65	Piston Rod		1
106	GB3452.1-82	O-Ring	9x1.8	1
107	CR6241-03-66	Spring		1
108	GB1235-76	O-Ring	32x3.1	1
109	CR6241-03-67	Bottom Board		1
110	GB68-85	Screw	M5x10	2
111	CR6241-03-69	Plate		1
112	GB70-85	Screw	M5x12	2
113	CR6241-03-68	Plug		1
114	CR6241-03-31	Vitta welding		1
115		Tube Fitting	Z 1/8" x ∅4	3
116		Tube Fitting	Z 1/8" x ∅6	1
117		Brass Tube	∅6x170	1
118	CR6241-03-71	Tube Fitting		1
119	CR6241-03-72	Nut		1
120	CR6241-03-73-2	Sleeve		1
121	CR6241-03-73-1	One Way Valve Ass		1
122	GB818-85	Screw	M5x14	4
123	CR6241-03-29	Shaft		1
124	GB70.1-85	Washer	M8	1

NOTE: SOME INDIVIDUAL PARTS MAY ONLY BE AVAILABLE AS AN ASSEMBLY

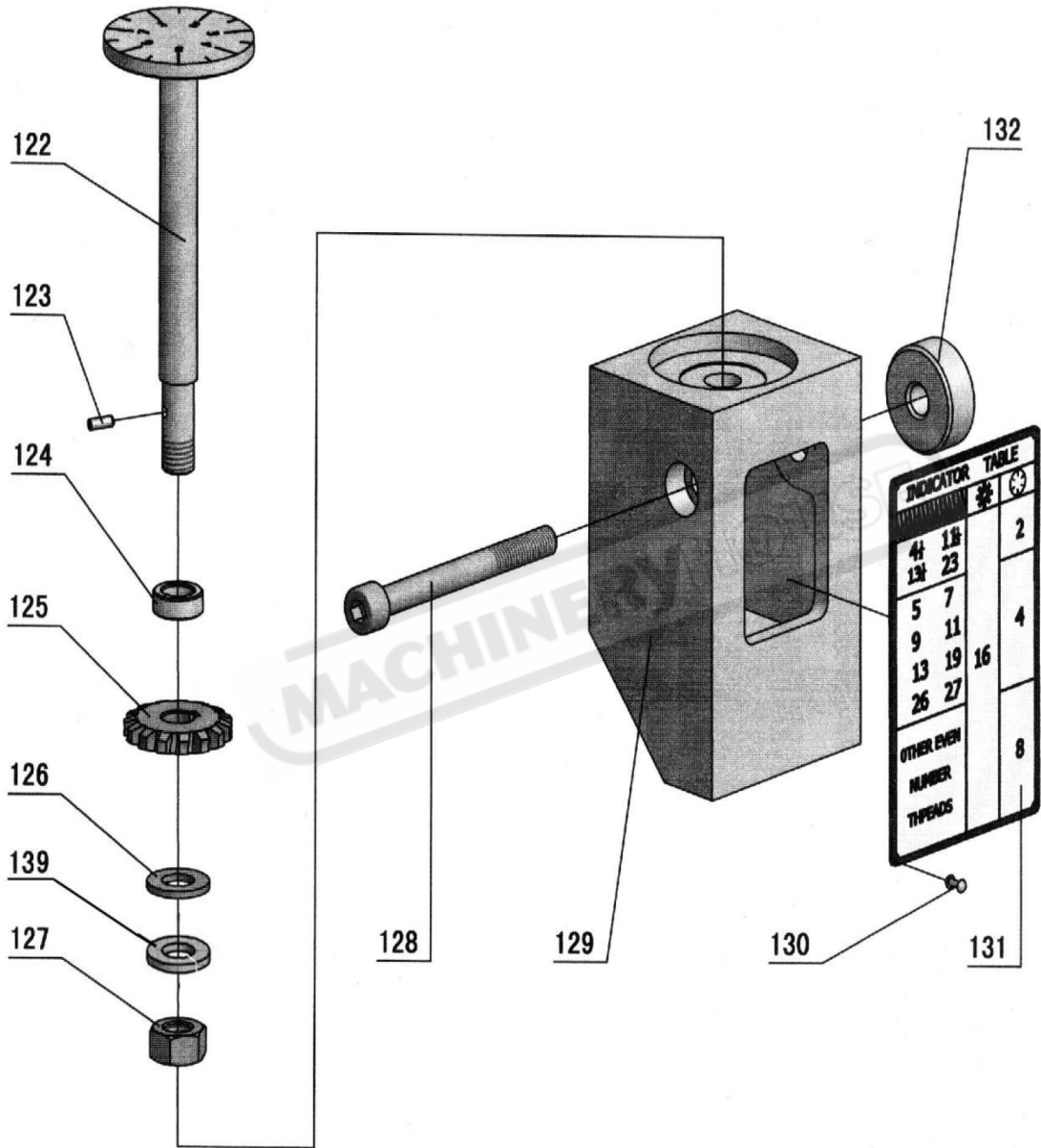
APRON PARTS DIAGRAMS



APRON A - D SHAFTS PARTS DIAGRAMS



APRON THREAD DIAL DIAGRAM



APRON SPARE PARTS LIST

No.	Part No.	Description	Specification	Qty
1	CR6241-04-03R	Lead Nut Assy (Right Hand)		1
1	CR6241-04-03	Lead Nut Assy (Left Hand)		1
2	CR6241-04-02	Gib		1
3	GB70-85	Screw	M6×16	3
4	GB80-85	Screw	M6×20	4
5	GB6170-86	Nut	M6	4
6	CR6241-04-18	Seat-Worm		1
7	CR6241-04-15	Bushing		2
8	GB80-85	Screw	M8×10	2
9	GB77-85	Screw	M8×10	2
10	GB1096-79	Key	6×12	1
11	CR6241-04-16	Sleeve-Feed Rod		1
12	CR6241-04-17	Gear		1
13		Oil Seal	TC32×42×8	2
14	GB812-88	Nut	M20×1.5	1
15	GB858-88	Nut	20	1
16	CR6241-04-21	Washer		1
17	GB301-84	Thrust Bearing	8104	2
18	CR6241-04-20	Worm Gear		1
19	SF-1	Set	2010	2
20	CR6241-04-19	Shaft		1
21	CR6241-04-23R	Safe Device Block (Right Hand)		1
21	CR6241-04-23	Safe Device Block (Left Hand)		1
22	GB894.1-86	Snap Ring	10	1
23	CR6241-04-30	Lever		1
24	GB70-85	Screw	M5×8	1
25	CR6241-04-32	Spring		1
26	CR6241-04-11	Bottom Cover		1
27	CR6241-04-12	Sealed Mat		1
28	GB70-85	Screw	M6×16	9
29	JB982-77	Washer	12	1
30	G38-3A	Oil Plug	Z 3/8"	1
31	CR6241-04-13	Bracket		1
32	GB119-86	Pin	B8×40	1
33	GB70-85	Screw	M6×16	2
34	GB80-85	Screw	M6×6	1
35	CR6241-04-14	Lever		1
36	GB77-85	Screw	M8×30	1
37	GB6170-86	Nut	M8	1
38		Oil Seal	TC15×25×7	1
39	CR6241-04-10	Pin		1
40	GB70-85	Screw	M8×12	1
41	CR6241-04-31	Screw		1
42	GB80-85	Screw	M8×10	1
43	CR6241-04-22	Spring		1
44	GB70-85	Screw	M6×12	3
45	CR6241-04-25R	Shaft (Right Hand)		1
45	CR6241-04-25	Shaft (Left Hand)		1
46	CR6241-04-26R	Buffer (Right Hand)		1
46	CR6241-04-26	Buffer (Left Hand)		1
47	GB1235-76	O-Ring	20×2.4	2
48	CR6241-04-27	Sleeve		1
49	GB70-85	Screw	M6×20	3
50	GB308-84	Steel Ball	1/4"	2

APRON SPARE PARTS LIST Cont.

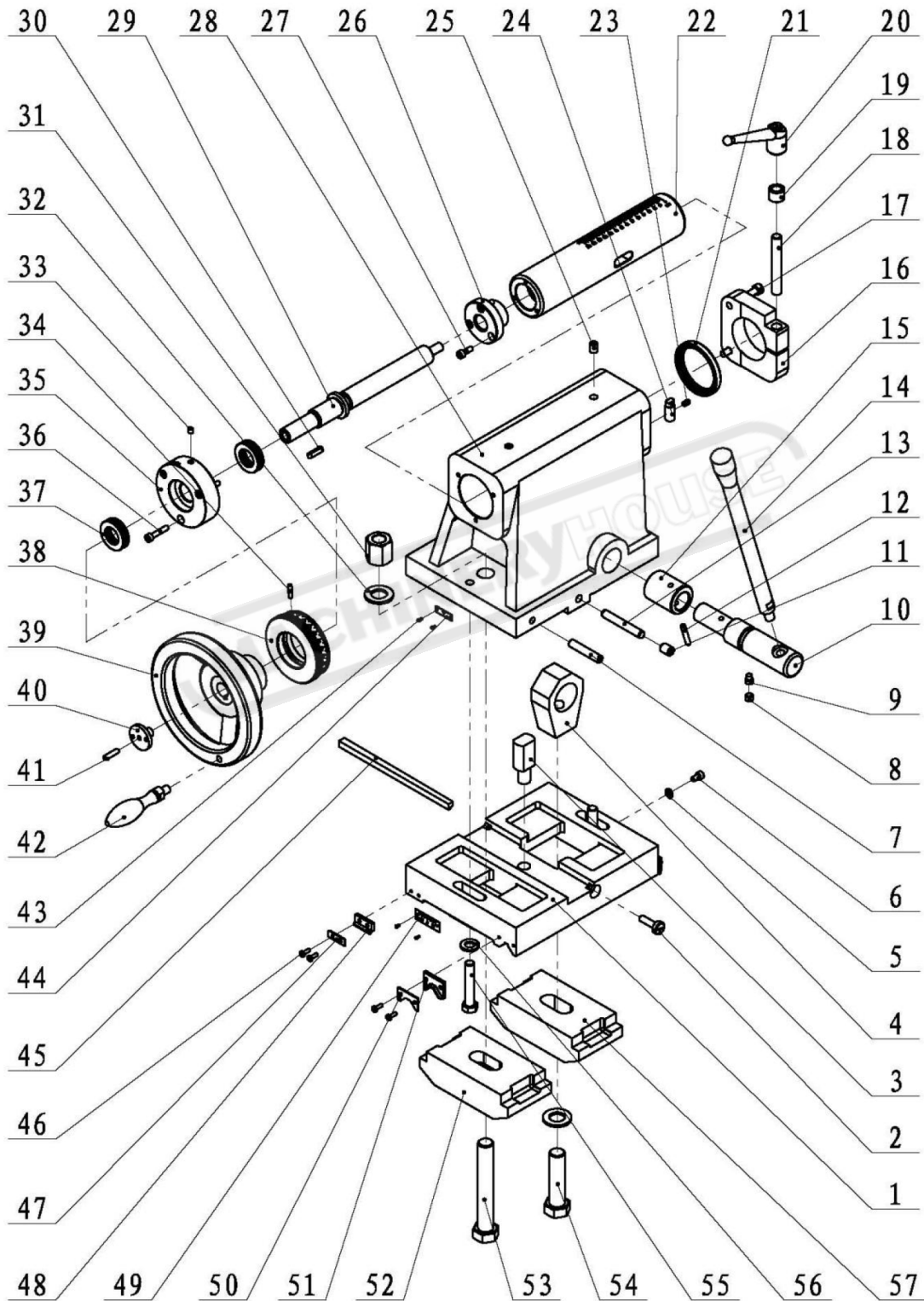
No.	Part No.	Description	Specification	Qty
51	CR6241-01-82	Spring		3
52	GB77-85	Screw	M8×10	4
53	GB70-85	Screw	M6×35	2
54	GB6170-86	Nut	M6	2
55	CR6241-04-71R	Knob (Right Hand)		1
55	CR6241-04-71	Knob (Left Hand)		1
56	GB1160.2-89	Oil Sight	A20	1
57	GB1235-76	O-Ring	32×3.5	2
58	CR6241-04-08	Washer		1
59	GB80-85	Screw	M8×10	1
60	CR6241-04-07R	Shaft Sleeve (Right Hand)		1
60	CR6241-04-07	Shaft Sleeve (Left Hand)		1
61	CR6241-01-100	Plate		1
62	CR6241-04-09	Lever		2
63	GB819-85	Screw	M4×10	2
64	CR6241-04-06R	Shaft (Right Hand)		1
64	CR6241-04-06	Shaft (Left Hand)		1
65	CR6241-04-04	Haft Nut (Metric)		1
65	CR6241-04-04Y	Haft Nut (Inch)		1
66	GB93-87	Spring Pin	M6	2
67	GB70-85	Screw	M6×20	2
68	CR6241-04-70R	Plate (Right Hand)		1
68	CR6241-04-70	Plate (Left Hand)		1
69	CR6241-04-05	Key		2
70	CR6241-04-53	Shaft		1
71	GB1096-79	Key	6×25	1
72	CR6241-04-55	Sealed Mat		1
73	GB1155-89	Ball Cup	6	1
74	CR6241-04-54	Seat		1
75	GB70-85	Screw	M6×25	4
76	SF-1	Bearing	2010	2
77	CR6241-04-57	Dial-Rack (Metric)		1
77	CR6241-04-57Y	Dial-Rack (Inch)		1
78	Q67-4-33	Spring	80	1
79	CR6241-04-58	Hand Wheel		1
80	GB80-85	Screw	M4×20	1
81	CR6241-04-60	Washer		1
82	CR6241-01-97	Screw		1
83	CR6241-04-59	Handle		1
84	CR6241-04-48	Pinon		1
85	GB879-86	Pin	5×35	1
86	GB1096-79	Key	6×20	1
87	GB5801-86	Needle Bearing	4644903	2
88	CR6241-04-56	Sleeve		1
89	GB80-85	Screw	M8×12	1
90	CR6241-04-49	Spacer		1
91	CR6241-04-50	Gear		1
92	GB278-89	Ball Bearing	80103	1
93	CR6241-04-52	Sealed Mat		1
94	CR6241-04-51	Cover		1
95	GB70-85	Screw	M6×12	3
96	GB894.1-86	Snap Ring	20	2
97	CR6241-04-41	Gear		1
98	CR6241-04-42	Shaft		1
99	GB308-84	Steel Ball	7/32"	1

APRON SPARE PARTS LIST Cont.

No.	Part No.	Description	Specification	Qty
100	CR6241-04-45	Change Gear		1
101	CR6241-04-46	Handle Lever		1
102	GB79-85	Screw	M5×10	1
103	CR6241-04-43	Change Sleeve		1
104	GB70-85	Screw	M6×12	2
105	CR6241-04-72	Plate		1
106	CR6241-04-44	Plug		1
107	CR6241-04-74	Washer		1
108	GB279-88	Ball Bearing	180105	1
109	CR6241-04-33	Worm Gear		1
110	CR6241-04-34	Gear		1
111	CR6241-04-37	Spring		1
112	CR6241-04-38	Spacer		1
113	GB1096-79	Key	8×12	1
114	CR6241-04-36	Pin		1
115	CR6241-04-35	Cover		1
116	GB77-85	Screw	M10×30	1
117	GB278-89	Ball Bearing	80204	1
118	CR6241-04-40	Sealed Mat		1
119	CR6241-04-39	Cover		1
120	GB70-85	Screw	M6×12	3
121	CR6241-04-69	Plate		1
122	CR6241-04-62	Dial Indicator Shaft (Metric)		1
122	CR6241-04-62Y	Dial Indicator Shaft (Inch)		1
123	GB879-86	Pin	3×8	1
124	CR6241-04-47	Spacer		1
125	CR6241-04-63	Gear (Metric)		1
125	CR6241-04-64	Gear (Metric)		1
125	CR6241-04-65	Gear (Metric)		1
125	CR6241-04-64Y	Gear (Inch)		1
125	CR6241-04-66	Gear (Metric)		1
125	CR6241-04-67	Gear (Metric)		1
126	GB97.2-85	Washer	10	1
127	GB6170-86	Nut	M10	1
128	GB70-85	Screw	M8×85	1
129	CR6241-04-61	Thread Dial Body		1
130	GB827-86	Rivet	2×5	15
131	CR6241-04-68	Indicator Dial (Metric)		1
131	CR6241-04-68Y	Indicator Dial (Inch)		1
132	CR6241-04-24	Spacer		1
133	CR6241-04-01R	Apron (Right Hand)		1
133	CR6241-04-01	Apron (Left Hand)		1
134	CR6241-04-29R	Hub (Right Hand)		1
134	CR6241-04-29	Hub (Left Hand)		1
135	CR6241-04-28	Sealed Mat		1
136	GB3452.1-82	O-Ring	11.8×1.8	1
137	GB879-86	Pin	5×16	2
138	SF-1	Bearing	2020	1
139	GB93-87	Spring Pin	10	1

NOTE: SOME INDIVIDUAL PARTS MAY ONLY BE AVAILABLE AS AN ASSEMBLY

TAILSTOCK PARTS DIAGRAM



TAILSTOCK SPARE PARTS LIST

No.	Part No.	Description	Specification	Qty
1	CR6250-05-19	Bottom Tailstock		1
2	CR6241-05-25	Screw		2
3	CR6241-05-23	Block-Adjusting		1
4	CR6241-05-24	Bracket		1
5	GB/T97.1-1985	Washer	6	1
6	GB/T70.1-2000	Screw	M6×10	1
7	CR6241-05-22	Screw-Brake		1
8	GB/T77-2000	Screw	M10×8	1
9	GB/T79-2000	Screw	M10×12	1
10	CR6241-05-04	Shaft		1
11	GB/T80-2000	Screw	M12×16	2
12	GB879-86	Spring Pin	6×36	1
13	GB119-86	Pin Shaft	10×70	2
14	CR6241-05-21	Lead Screw		1
15	CR6241-05-26	Eccentric Block		1
16	CR6241-05-02A	Locking Block		1
17	GB/T70.1-2000	Screw	M8×25	2
18	CR6241-05-04A	Screw Bolt		1
19	CR6241-05-03A	Washer		1
20	HY8310.12-1	Adjustable Fixed Handle	A-M12×95	1
21	GB/T13871-1992	Oil-Seal	TC60×75×9	1
22	CR6241-05-05A	Tailstock Sleeve		1
23	GB/T80-2000	Screw	M6×10	1
24	CR6241-05-27	Pin Shaft		1
25	GB1155-89	Ball Cup	10	2
26	CR6241-05-06	Feed Nut (Metric)		1
26	CR6241-05-06Y	Feed Nut (Inch)		1
27	GB/T70.1-2000	Screw	M6×16	3
28	CR6241-05-01A	Tailstock Body		1
29	CR6241-05-07	Feed Screw (Metric)		1
29	CR6241-05-07Y	Feed Screw (Inch)		1
30	GB1096-79	Key	6×25	1
31	GB/T56-1988	Nut	M20	1
32	GB/T97.1-1985	Washer	20	2
33	GB1155-89	Ball Cup	6	1
34	GB/T80-2000	Screw	M5×20	1
35	CR6241-05-08	Cap-Body End (Metric)		1
35	CR6241-05-08Y	Cap-Body End (Inch)		1
36	GB/T70.1-2000	Screw	M6×30	3
37	GB/T301-1995	Thrust Bearing	51105	2
38	CR6241-05-09	Dial-Feed (Metric)		1
38	CR6241-05-09Y	Dial-Feed (Inch)		1
39	CR6241-05-10	Handle Wheel		1
40	CR6241-05-11	Lock Nut		1
41	GB/T80-2000	Screw	M6×25	1
42	CR6241-04-59	Handle		1
43	GB/T827-1986	Rivet	2×5	4
44	CR6241-05-28	Plate		1
45	CR6241-05-12	Taper Gib Strip		1
46	GB/T818-2000	Cross Recessed Head Screw	M4×12	8

NOTE: SOME INDIVIDUAL PARTS MAY ONLY BE AVAILABLE AS AN ASSEMBLY

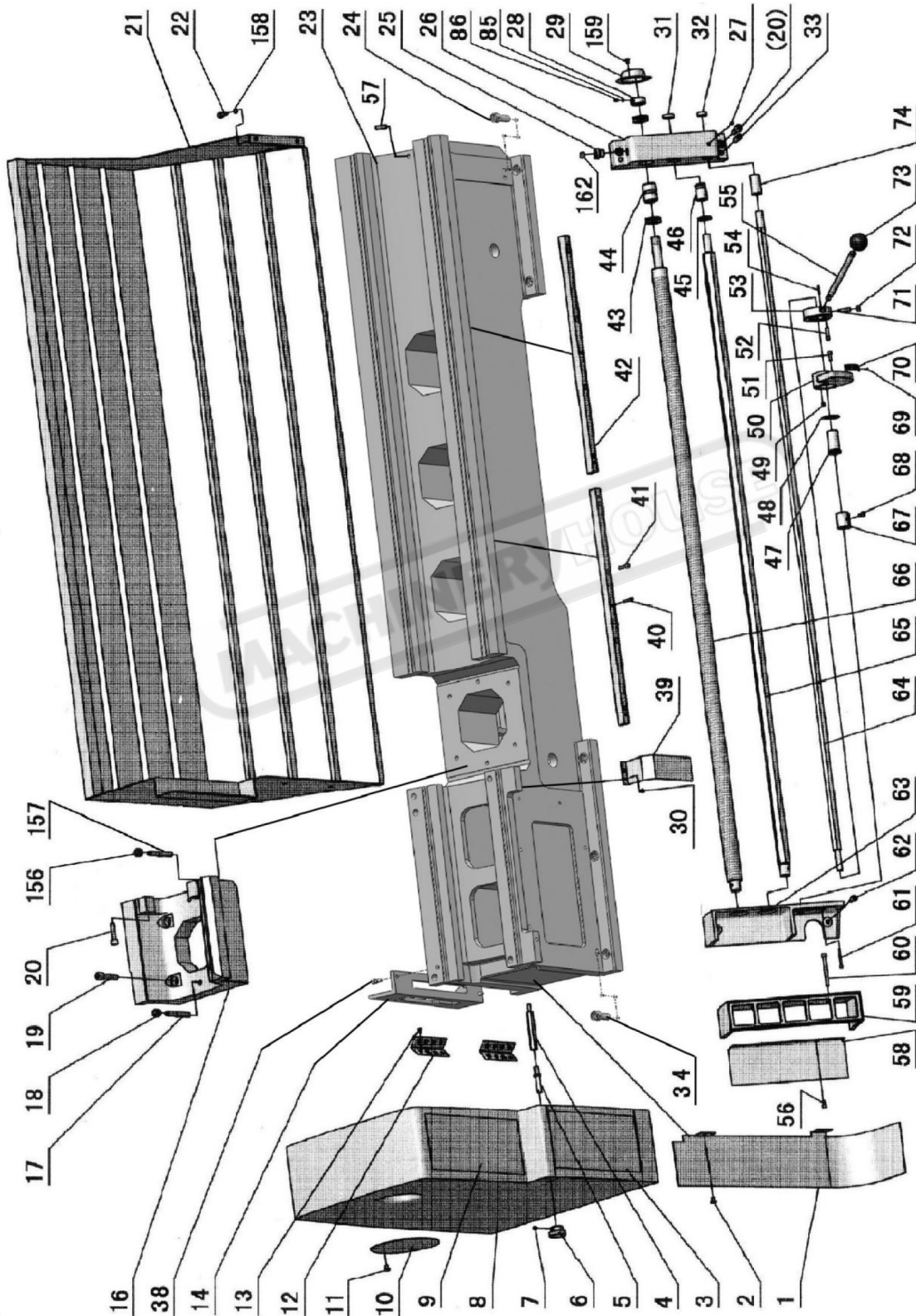
TAILSTOCK SPARE PARTS LIST Cont.

No.	Part No.	Description	Specification	Qty
47	CR6241-05-13	Case-Wiper		2
48	CR6241-05-14	Wiper		2
49	CR6241-05-29	Plate		1
50	CR6241-05-15	Case-Wiper		2
51	CR6241-05-16	Wiper		2
52	CR6241-05-18	Brake Block		1
53	GB/T5782-2000	Bolt	M20×160	1
54	GB/T5782-2000	Screw	M20×110	1
55	GB/T5782-2000	Screw	M12×90	2
56	GB/T95-1985	Washer	M12	2
57	CR6241-05-17	Brake Block		1

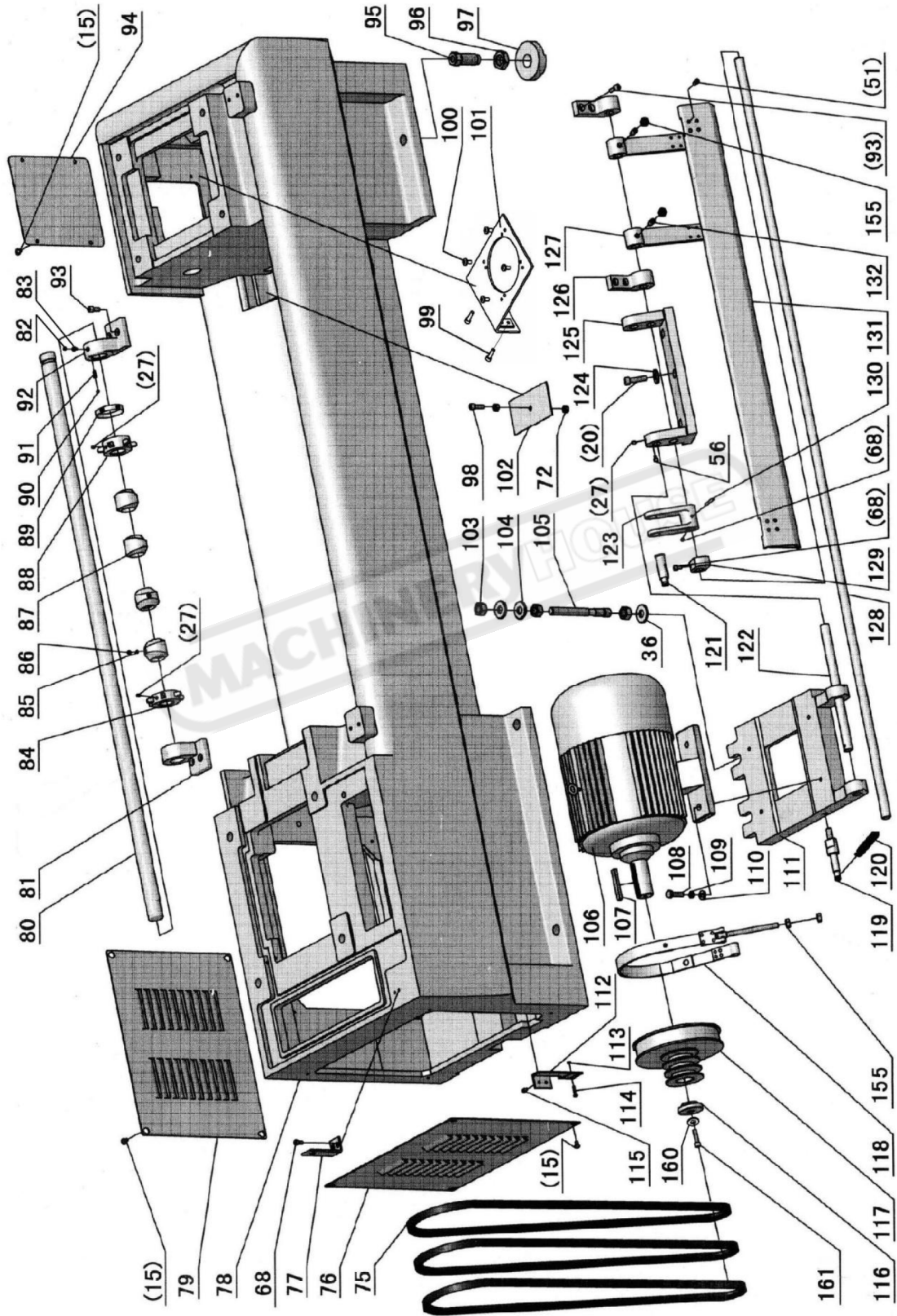
NOTE: SOME INDIVIDUAL PARTS MAY ONLY BE AVAILABLE AS AN ASSEMBLY

MACHINERYHOUSE

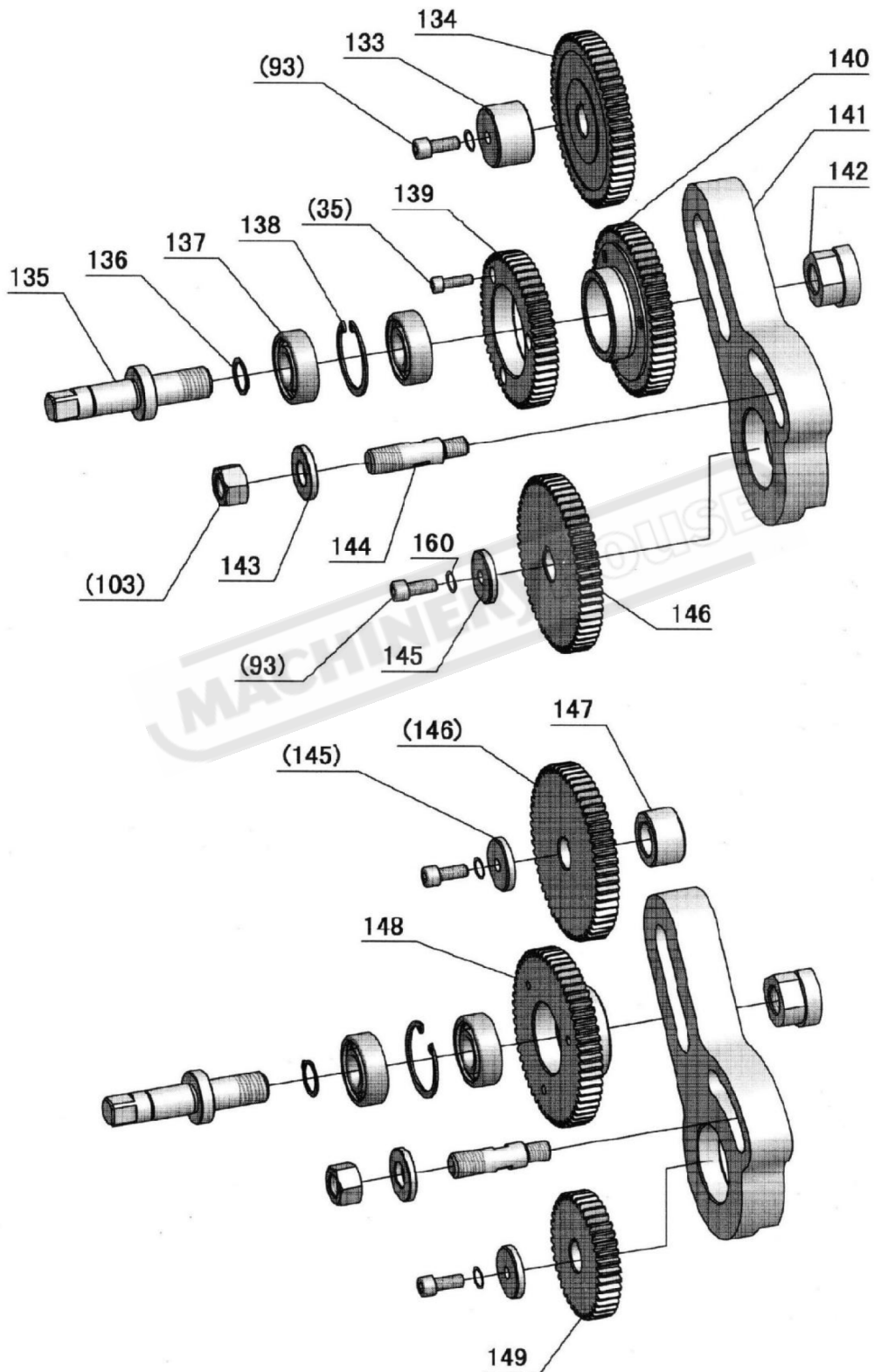
BED ASSEMBLY PARTS DIAGRAM



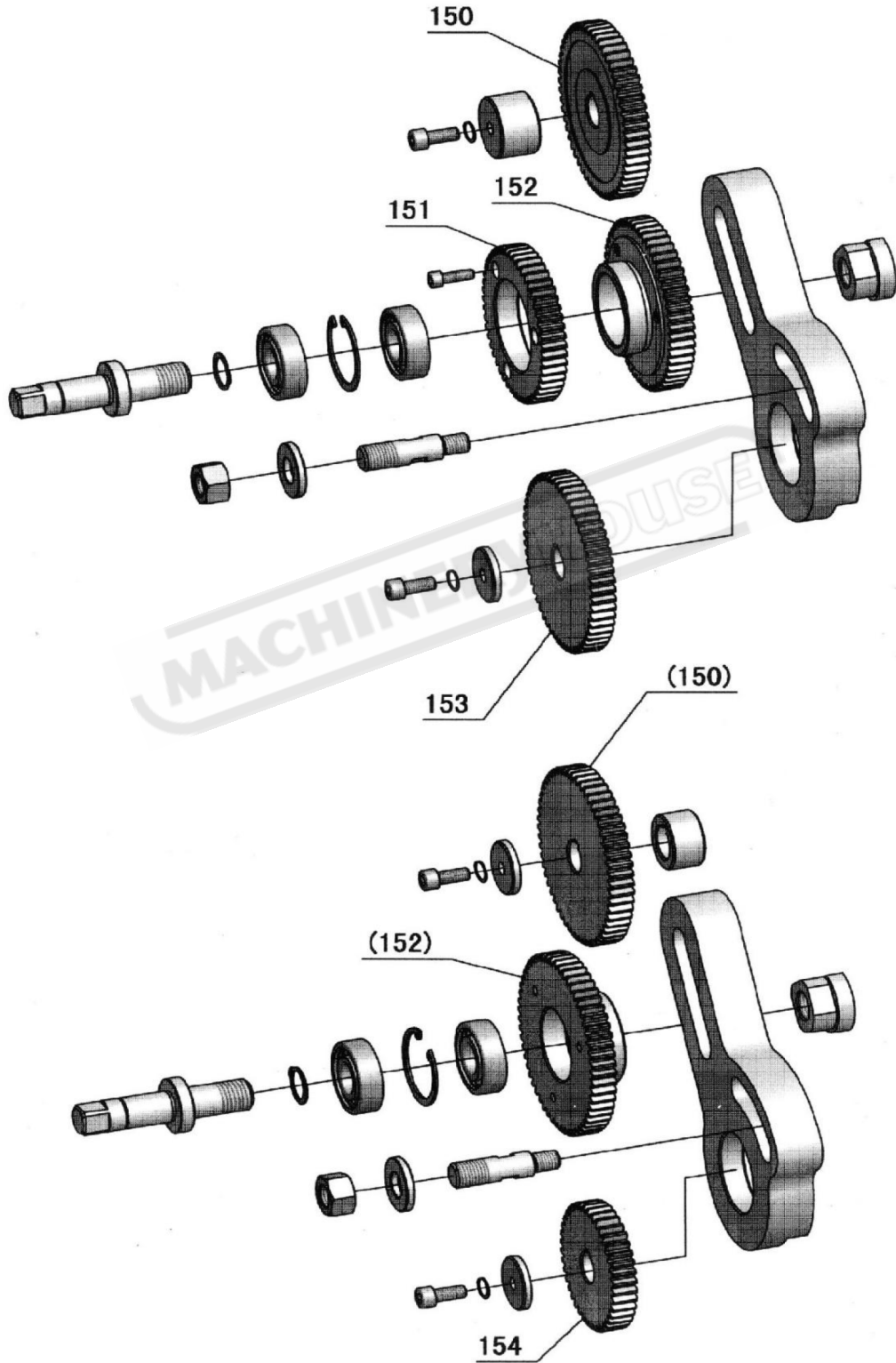
BED ASSEMBLY PARTS DIAGRAM Cont.



BED ASSEMBLY PARTS DIAGRAM Cont.



BED ASSEMBLY PARTS DIAGRAM Cont.



BED ASSEMBLY SPARE PARTS LIST Cont.

No.	Part No.	Description	Specification	Qty
1	CR6241-08-22	Oil Guard		1
2	GB70-85	Screw	M6×10	2
3	CR6241-08-21	Plate		1
4	CR6241-08-20	Bolt		1
5	CR6241-08-18	Screw		1
6	CR6241-08-17	Nut		1
7	GB80-85	Screw	M6×8	1
8	CR6251L-08-01	Cover-End		1
9	CR6250-08-02	Plate (Metric)		1
9	CR6250-08-02Y	Plate (Inch)		1
10	CR6241-08-23	Cover		1
11	GB/T70.2-2000	Screw	M6×10	1
12	GB7277-87	Hinge	100	2
13	GB68-85	Screw	M5×10	12
14	CR6241A-06-07	Heel Block		1
14	GB70-85	Screw	M6×25	2
14	CR6241A-06-06	Stand		1
15	GB818-85	Screw	M6×10	12
16	CR6241A-06-02	Saddle		1
17	GB118-86	Pin	10×70	2
18	GB73-85	Screw	M6×10	2
19	GB70-85	Screw	M12×50	4
20	GB70-85	Screw	M10×40	7
21	CR6241A-06-05	Guard Assembly 1000		1
21	CR6241A-06-05-1	Guard Assembly 1500		1
21	CR6241A-06-05-2	Guard Assembly 2000		1
22	GB70-85	Screw	M8×16	4
23	CR6241A-06-01	Bed 1000		1
23	CR6241A-06-01-1	Bed 1500		1
23	CR6241A-06-01-2	Bed 2000		1
24	GB70-85	Screw	M16×40	4
25	CR6241-06-21	Plug-Oil Inlet		1
26	CR6241-06-18	Bracket		1
27	GB80-85	Screw	M6×8	4
28	CR6241-06-15	Nut		1
29	CR6241-06-70	Cover		1
30	GB818-85	Screw	M5×8	2
31	CR6241-06-19	Plug		1
32	CR6241-06-20	Plug		1
33	GB118-86	Taper Pin	8×50	2
34	GB70-85	Screw		6
35	GB70-85	Screw	M6×20	3
36	GB93-86	Spring Washer	16	2
38	GB70-85	Screw	M8×20	2
39	CR6241-06-17	Protection Cover		1
40	GB879-86	Spring Pin	5×30	6
41	GB70-85	Screw	M6×25	10
42	CR6241-06-12A	Rack		1
42	CR6241-06-12B	Rack		1
42	CR6241-06-13	Rack (Left Hand)		1
43	GB301-84	Thrust Bearing	8104	2
44	CR6241-06-22	Sleeve		1
45	CR6241-06-23	Spacer		1

NOTE: SOME INDIVIDUAL PARTS MAY ONLY BE AVAILABLE AS AN ASSEMBLY

OPERATION MANUAL

BED ASSEMBLY SPARE PARTS LIST Cont.

No.	Part No.	Description	Specification	Qty
46	CR6241-06-16	Bush		1
47	CR6241-06-55	Shaft Sleeve		1
48	CR6241-06-57	Washer		1
49	Q81-1	Spring	1×6×20	3
50	CR6241-06-58	Switch Bracket		1
51	GB70-85	Screw	M6×16	10
52	CR6241-06-54	Pin		1
53	CR6241-06-53	Bracket		1
54	GB879-86	Spring Pin	3×20	1
55	CR6241-06-56	Lever		1
56	GB70-85	Screw	M5×8	3
57	GB878-86	Pin	M12×50	1
58	CR6241-06-05	Cover		1
59	CR6251T-06-10	Seat-Pilot Light		1
60	GB70-85	Screw	M6×70	2
61	GB70-85	Screw	M4×40	2
62	GB70-85	Screw	M8×25	2
63	CR6241A-06-04	Seat-Switch		1
64	CR6241A-06-11	Started Rod 1000		1
64	CR6241A-06-11-1	Started Rod 1500		1
64	CR6241A-06-11-2	Started Rod 2000		1
65	CR6241A-06-10	Feed Rod 1000		1
65	CR6241A-06-10-1	Feed Rod 1500		1
65	CR6241A-06-10-2	Feed Rod 2000		1
66	CR6241A-06-09Y	Lead Screw 1000(Inch)		1
66	CR6241A-06-09	Lead Screw 1000(Metric)		1
66	CR6241A-06-09-1Y	Lead Screw 1500(Inch)		1
66	CR6241A-06-09-1	Lead Screw 1500(Metric)		1
66	CR6241A-06-09-2Y	Lead Screw 2000(Inch)		1
66	CR624A1-06-09-2	Lead Screw 2000(Metric)		1
67	CR6241-06-68	Cam		1
68	GB70-85	Screw	M6×12	5
69	GB827-86	Rivet	2×5	12
70	CR6241-06-64	Plate		1
71	GB79-85	Screw	M8×30	2
72	GB6170-86	Nut	M8	4
73	Z16-1	Lever Bush	M12×40	1
74	CR6241-06-26	Bush		1
75	7.5HP/60HZ	Belt	B74"	3
75	7.5HP/50HZ	Belt	B75"	3
76	CR6241A-06-08A	Cover Motor Seat		1
77	CR6241-08-19	Limited Switch Seat		1
78	CR6241A-06-03A	Stand 1000		1
78	CR6241A-06-03-1A	Stand 1500		1
78	CR6241A-06-03-2A	Stand 2000		1
79	CR6241-06-36	Cover Motor Seat		1
80	CR6241A-06-12	Auto Stopping Shaft 1000		1
80	CR6251-06-20-1	Auto Stopping Shaft 1500		1
80	CR6251-06-20-2	Auto Stopping Shaft 2000		1
81	CR6241-06-06	Bracket		1
82	GB77-85	Screw	M8×6	1
83	GB79-85	Screw	M8×12	1
84	CR6241-06-30	Star Type Ring		1
85	CR6241-06-34	Shoe Clamp		5

OPERATION MANUAL

BED ASSEMBLY SPARE PARTS LIST Cont.

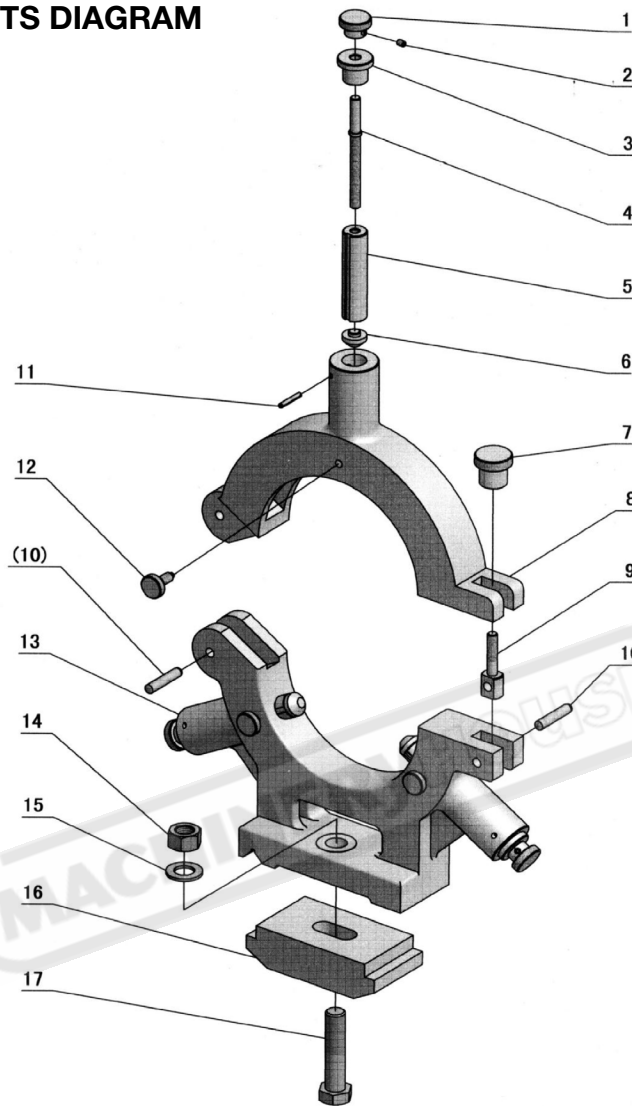
No.	Part No.	Description	Specification	Qty
86	GB77-85	Screw	M8×6	5
87	CR6241-06-33	Cam		4
88	CR6241-06-31	Star Type Ring		1
89	CR6241-06-32	Plate		1
90	GB308-84	Steel Ball	6	1
91	Q81-1	Spring	0.9×5×25	1
92	CR6241-06-07	Bracket		1
93	GB70-85	Screw	M8×20	10
94	CR6241-06-38	Pump Hole Cover		1
95	CR6241-06-37	Bolt		6
96	GB6173-86	Nut	M24×2	6
97	CR6241-06-59	Block-Leveling		6
98	GB70-85	Screw	M8×30	1
99	GB70-85	Screw	M6×25	2
100	GB818-85	Screw	M6×10	4
101	CR6241-06-65	Coolant Pump Seat		1
102	CR6241-06-52	Screen		1
103	GB6170-86	Nut	M16	7
104	CR6241-06-62	Washer		4
105	CR6241-06-49	Screw		2
106		Motor	7.5kw	1
107	GB1096C-79	Key	10×70	1
108	GB5782-86	Bolt	M10×35	4
109	GB93-87	Spring Washer	10	4
110	GB97.1-85	Washer	10	4
111	CR6241-06-39	Motor Seat		1
112	CR6241-06-66	Limited Switch Seat		1
113	GB6170-86	Nut	M4	2
114	GB818-85	Screw	M4×35	2
115	GB70-85	Screw	M5×10	2
116	CR6241-06-09	Washer		1
117	CR6241-06-08-1	Belt Pulley	60Hz	1
117	CR6241-06-08	Belt Pulley	50Hz	1
118	CR6241-06-50	Belt-Brake		1
119	CR6241-06-51	Shaft		1
120	Q81-3	Spring	3×16×115	1
121	CR6241-06-42	Shaft		1
122	CR6241-06-47	Shaft		1
123	CR6241-06-43	Arm Brake		1
124	CR6241-06-67	Washer		3
125	CR6241-06-45	Bracket-Motor Seat		1
126	CR6241-06-40	Bracket		2
127	CR6241-06-46	Arm		2
128	CR6241A-06-13	Shaft 1000		1
128	CR6241A-06-13-1	Shaft 1500		1
128	CR6241A-06-13-2	Shaft 2000		1
129	CR6241-06-41	Cam		1
130	GB879-86	Spring Pin	5×40	1
131	CR6241-06-44	Pedal-Bracket 1000		1
131	CR6241-06-44-1	Pedal-Bracket 1500		1
131	CR6241-06-44-2	Pedal-Bracket 2000		1
132	GB79-85	Screw	M10×25	2
133	CR6241-08-02	Spacer		1

BED ASSEMBLY SPARE PARTS LIST Cont.

No.	Part No.	Description	Specification	Qty
134	CR6251-08-02	Gear (Metric)	55T×M2.25	1
135	CR6241-08-04	Bolt		1
136	GB894.1-86	Snap Ring	20	1
137	GB279-88	Ball Bearing	180204	2
138	GB893.1-86	Snap Ring	47	1
139	CR6251-08-08	Gear (Metric)	49T×M2.25	1
140	CR6251-08-09	Gear (Metric)	54T×M2.25	1
141	CR6251-08-06	Bracket		1
142	CR6241-08-05	Nut		1
143	CR6241-08-13	Washer		1
144	CR6251-08-04	Bolt		1
145	CR6241-08-07	Spacer		1
146	CR6251-08-05	Gear (Metric)	56T×M2.25	1
147	CR6241-08-12	Spacer		1
148	CR6251-08-09Y	Gear (Inch)	57T×M2.25	1
149	CR6251-08-11	Gear (Metric)	40T×M2.25	1
150	CR6251-08-02Y	Gear (Inch)	48T×M2.25	1
151	CR6251-08-12Y	Gear (Inch)	66T×M2.25	1
152	CR6251-08-09Y	Gear (Inch)	57T×M2.25	1
153	CR6251-08-11Y	Gear (Inch)	42T×M2.25	1
154	CR6251-08-05Y	Gear (Inch)	57T×M2.25	1
155	GB6170-86	Nut	M10	4
156	GB73-85	Screw	M5×8	2
157	GB118-86	Pin	8×40	2
158	GB97.1-85	Washer	8	4
159	GB70-85	Screw	M4×8	2
160	GB93-87	Spring Washer	8	3
161	GB70-85	Screw	M8×40	1
162	CR6241-06-24	Plate		1

NOTE: SOME INDIVIDUAL PARTS MAY ONLY BE AVAILABLE AS AN ASSEMBLY

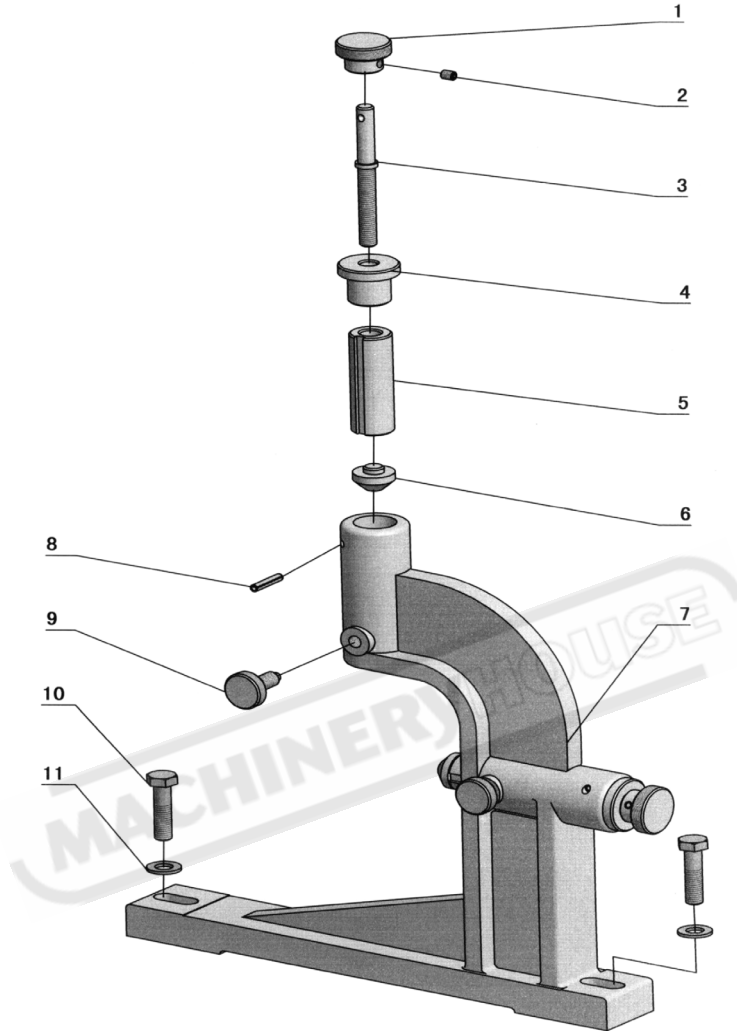
FIXED STEADY PARTS DIAGRAM



FIXED STEADY SPARE PARTS LIST

No.	Part No.	Description	Specification	Qty
1	CR6241-10-12	Rotate Handle		3
2	GB78-85	Screw	M6×8	3
3	CR6241-10-06	Bush		3
4	CR6241-10-04	Screw Shaft		3
5	CR6241-10-05	Sleeve		3
6	CR6241-10-13	Bracket		1
7	CR6241-10-08	Handle		1
8	CR6241-10-02	Upside of Steady Rest		1
9	CR6241-10-07	Clamping Screw		1
10	GB119-86	Pin	10×50	1
11	GB879-86	Spring Pin	5×32	3
12	CR6241-10-11	Limited Screw		3
13	CR6250-10-01	Downside of Steady Rest		1
14	GB6170-86	Nut	M20	1
15	GB97.1-85	Washer	20	1
16	CR6241-10-14	Clamping Bracket		1
17	GB5780-86	Bolt	M20×90	1

TRAVELING STEADY PARTS DIAGRAM

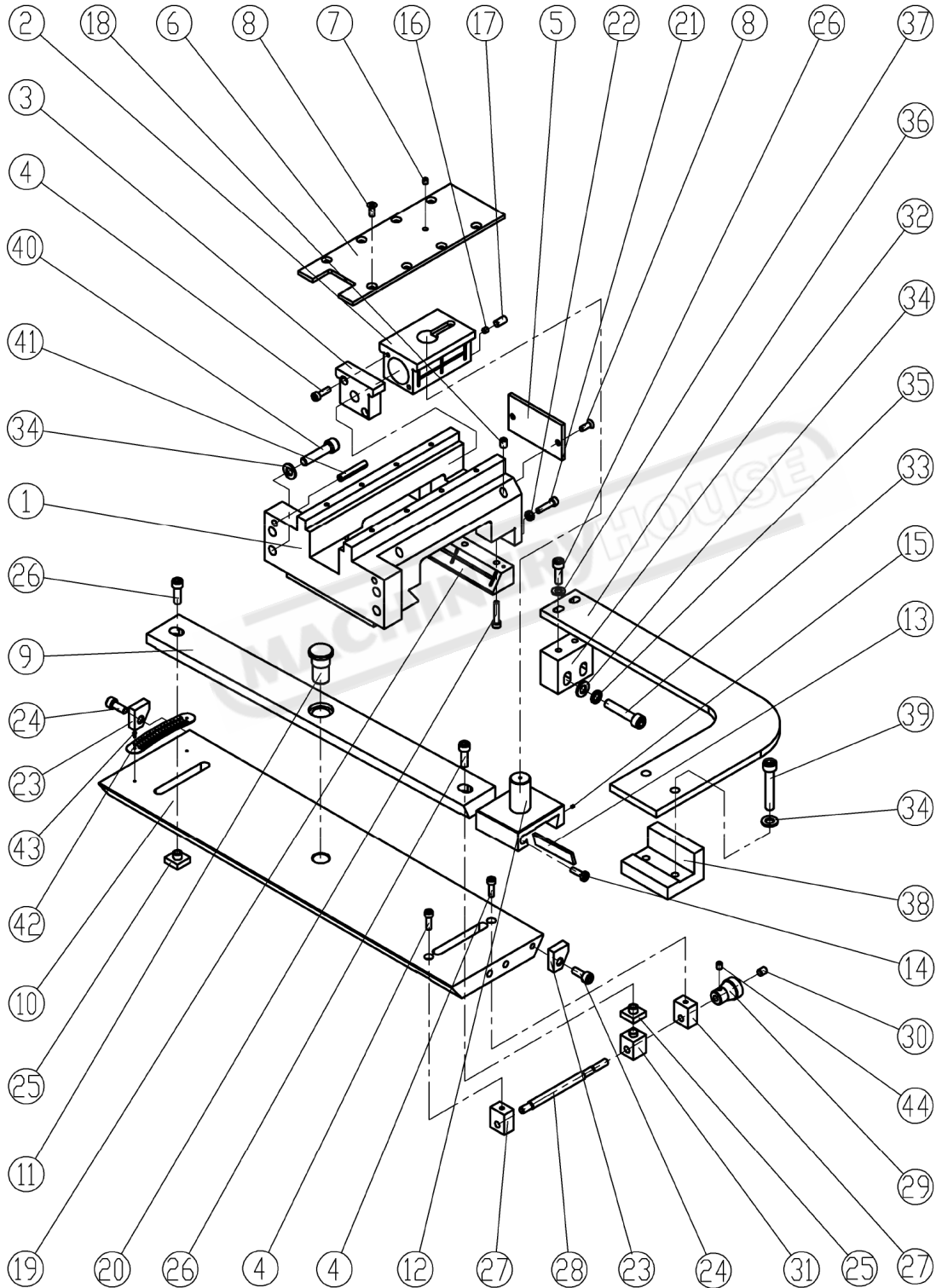


NOTE: SOME INDIVIDUAL PARTS MAY ONLY BE AVAILABLE AS AN ASSEMBLY

TRAVELING STEADY SPARE PARTS LIST

No.	Part No.	Description	Specification	Qty
1	CR6241-10-12	Rotate Handle		2
2	GB78-85	Screw	M6×8	2
3	CR6241-10-09	Screw Shaft		2
4	CR6241-10-06	Bush		2
5	CR6241-10-10	Sleeve		2
6	CR6241-10-13	Bracket		2
7	CR6250-10-03	Follow Rest		1
8	GB879-86	Spring Pin	5×26	2
9	CR6241-10-11	Limited Screw		2
10	GB5782-86	Bolt	M10×40	2
11	GB97.1-85	Washer		2

TAPER TURNING ATTACHMENT DIAGRAM

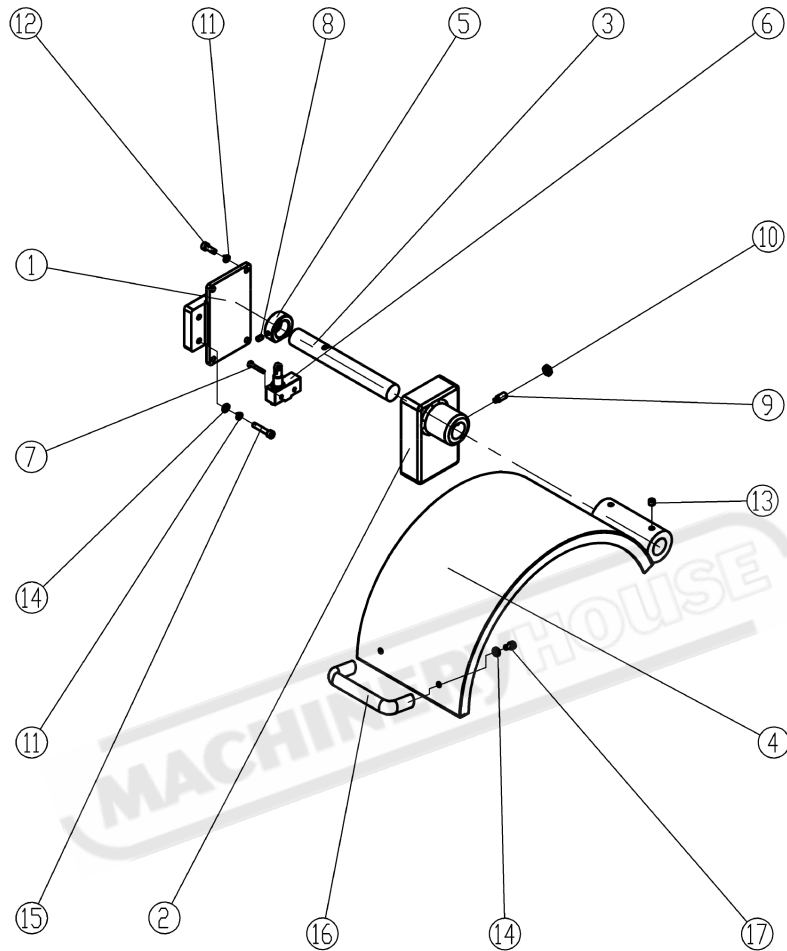


TAPER TURNING ATTACHMENT PARTS LIST

No.	Part No.	Description	Specification	Qty
1	CR6241-17-10	Main Support		1
2	CR6241-17-07	Slide Block		1
3	CR6241-17-01	End Block		1
4	GB70-85	Socket Head Cap Screw	M6×20	4
5	CR6241-17-02	Stopper		1
6	CR6241-17-06	Press Plate Cover		1
7	GB1155-89	Press-Fit Oil Cup	6	1
8	GB819-85	Cross Recess Sunk Screw	M6×16	10
9	CR6241-17-0510	Profiling Plate		1
10	CR6241-17-2411	Profiling Seat		1
11	CR6241-17-0912	Position Axle		1
12	CR6241-17-08	Pivot		1
13	CR6241-17-18	Inlaid Strip		1
14	CR6241-17-19	Press Screw		2
15	CR6241-17-16	Block Pin		3
16	CR6241-17-17	Copper Washer		1
17	GB77-85	Socket Flat Set Screw	M8×16	1
18	GB1155-89	Press-Fit Oil Cup	8	2
19	CR6241-17-14	Wedge		1
20	GB70-85	Socket Head Cap Screw	M6×30	3
21	GB70-85	Socket Head Cap Screw	M6×25	3
22	GB6170-86	Nut	M6	3
23	CR6241-17-03	Stopper		2
24	GB70-85	Socket Head Cap Screw	M8×20	2
25	CR6241-17-11	Mobile Block		2
26	GB70-85	Socket Head Cap Screw	M8×25	4
27	CR6241-17-15	Adjustment Supporter		2
28	CR6241-17-12	Adjustment Screw		1
29	CR6241-17-20	Handle		1
30	GB77-85	Socket Flat Set Screw	M8×10	1
31	CR6241-17-13	Adjustment Nut		1
32	CR6241-17-21	Connection Block		1
33	GB70-85	Socket Head Cap Screw	M10×50	2
34	GB97.1-85	Flat Washer	10	8
35	GB93-87	Spring Washer	10	2
36	CR6241-17-22	Pull Rod		1
37	GB97.1-85	Flat Washer	8	2
38	CR6241-17-23	Pressed Block		1
39	GB70-85	Socket Head Cap Screw	M10×60	2
40	GB70-85	Socket Head Cap Screw	M10×45	4
41	GB879-86	Spring Cylindrical Pin	8×45	2
42	CR6241-17-04	Sign Board		1
43	GB827-86	Rivet	2×5	2
44	GB78-85	Screw	M5×6	1

NOTE: SOME INDIVIDUAL PARTS MAY ONLY BE AVAILABLE AS AN ASSEMBLY

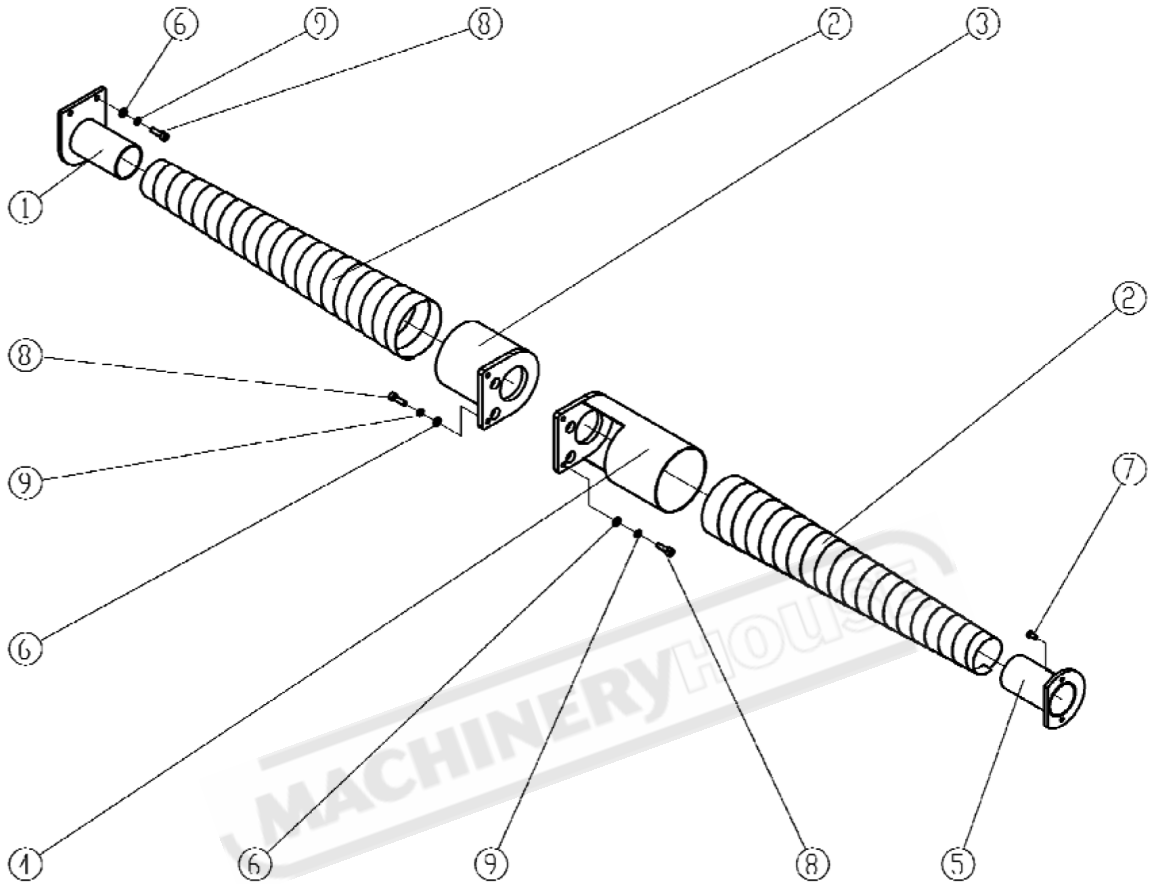
CHUCK GUARD PARTS DIAGRAM



CHUCK GUARD PARTS LIST

No.	Part No.	Description	Specification	Qty
1	CR6246B-15-02	Support		1
2	CR6246B-15-03	Guard Stand		1
3	CR6241-15-02	Shaft		1
4	CR6246B-15-01	Cover		1
5		Sleeve		1
6	CR6241-15-05	Microswitch		1
7	GB818-85	Screw	M4×25	2
8	GB78-85	Screw	M6×10	1
9	GB79-85	Screw	M8×20	1
10	GB6172-86	Nut	M8	1
11	GB93-87	Spring Washer	M6	6
12	GB70-85	Socket Head Cap Screw	M6×16	4
13	GB80-85	Screw	M8×8	2
14	GB97.1-85	Flat Washer	M6	4
15	GB70-85	Socket Head Cap Screw	M6×30	2
16	HY8315.4	Handle	A114	1
17	GB70-85	Socket Head Cap Screw	M6×10	2

LEADSCREW GUARD DIAGRAM

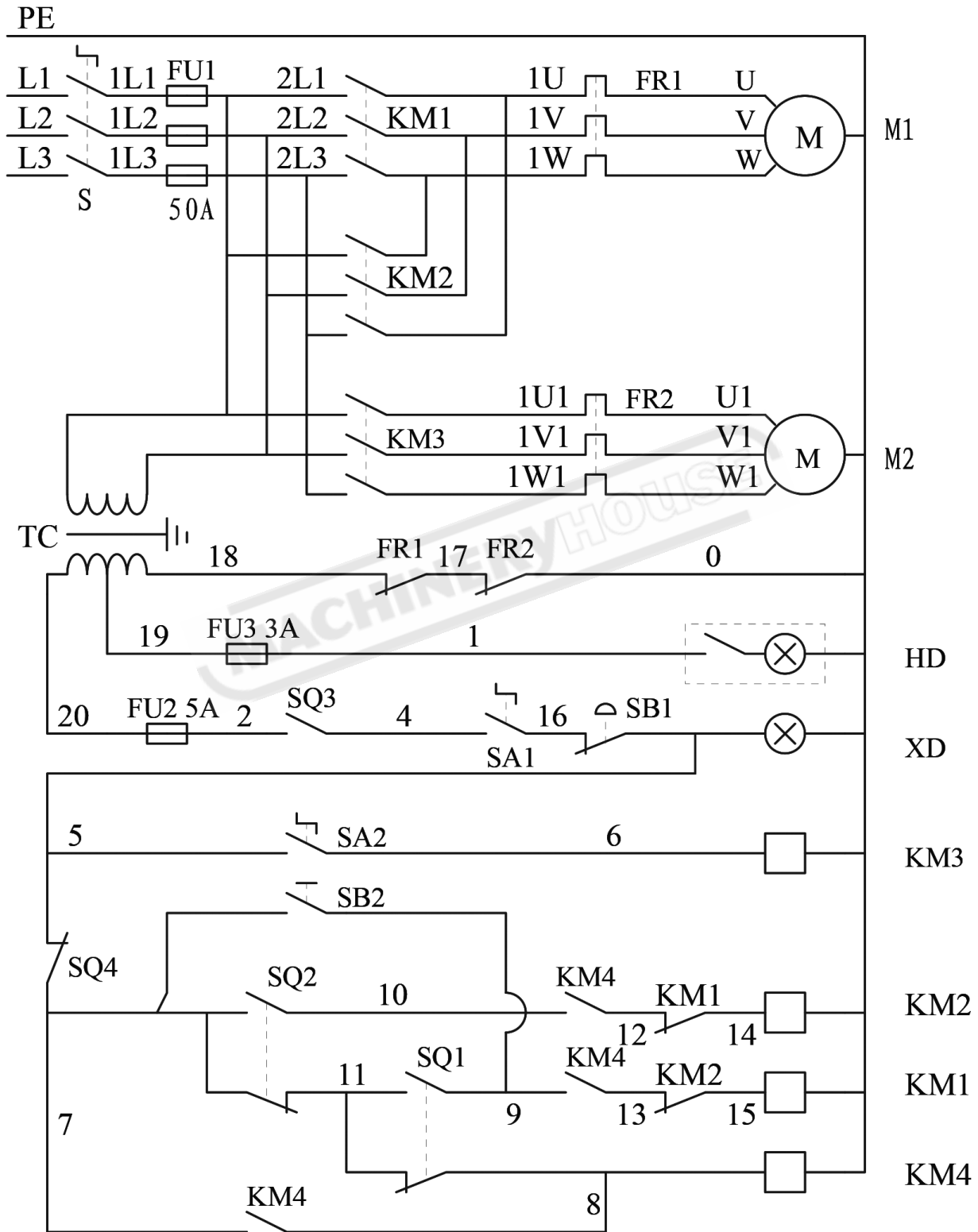


LEADSCREW GUARD PARTS LIST

No.	Part No.	Description	Specification	Qty
1	CR6251-16-01	Connect Sleeve		1
2	CR6251-16-04	Protect Sleeve	1000	2
2	CR6251-16-04-1	Protect Sleeve	1500	2
2	CR6251-16-04-2	Protect Sleeve	2000	2
2	CR6251-16-04-3	Protect Sleeve	3000	2
3	CR6251-16-02	Connect Sleeve	1000. 1500	1
3	CR6251-16-02-2	Connect Sleeve	2000. 3000	1
4	CR6251-16-03	Connect Sleeve	1000. 1500	1
4	CR6251-16-03-2	Connect Sleeve	2000. 3000	1
5	CR6251-16-05	Connect Sleeve		1
6	GB97.1-85	Flat Washer	M6	6
7	GB819-85	Screw	M5×12	2
8	GB70-85	Socket Cap Screw	M6×20	6
9	GB93-87	Spring Washer	M6	6

NOTE: SOME INDIVIDUAL PARTS MAY ONLY BE AVAILABLE AS AN ASSEMBLY

WIRING DIAGRAM



WIRING DIAGRAM Cont.

